

Pumilio 2 Rabbit mAb

Catalog No.: A19783 **Recombinant**

Basic Information

Observed MW

110-125kDa

Calculated MW

114kDa

Category

Primary antibody

Applications

ELISA, WB

Cross-Reactivity

Human, Mouse, Rat

CloneNo number

ARC2308

Background

This gene encodes a protein that belongs to a family of RNA-binding proteins. The encoded protein functions as a translational repressor during embryonic development and cell differentiation. This protein is also thought to be a positive regulator of cell proliferation in adipose-derived stem cells. Alternate splicing results in multiple transcript variants.

Recommended Dilutions

WB 1:500 - 1:1000

Immunogen Information

Gene ID

23369

Swiss Prot

Q8TB72

Immunogen

A synthetic peptide corresponding to a sequence within amino acids 1-100 of human Pumilio 2 (Q8TB72).

Synonyms

PUMH2; PUML2; Pumilio 2

Contact

 | 400-999-6126

 | cn.market@abclonal.com.cn

 | www.abclonal.com.cn

Product Information

Source

Rabbit

Isotype

IgG

Purification

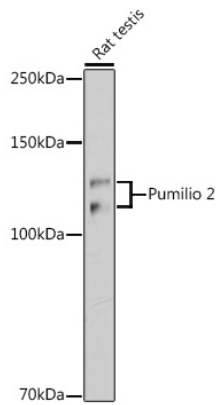
Affinity purification

Storage

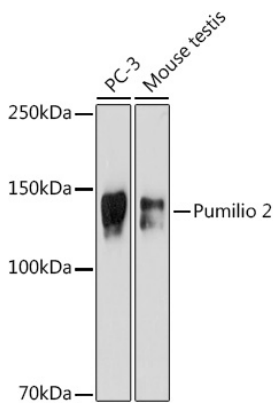
Store at -20°C. Avoid freeze / thaw cycles.

Buffer: PBS with 0.02% sodium azide, 0.05% BSA, 50% glycerol, pH7.3.

Validation Data



Western blot analysis of lysates from Rat testis, using Pumilio 2 Rabbit mAb (A19783) at 1:1000 dilution.
Secondary antibody: HRP Goat Anti-Rabbit IgG (H+L) (AS014) at 1:10000 dilution.
Lysates/proteins: 25µg per lane.
Blocking buffer: 3% nonfat dry milk in TBST.
Detection: ECL Basic Kit (RM00020).
Exposure time: 180s.



Western blot analysis of various lysates using Pumilio 2 Rabbit mAb (A19783) at 1:500 dilution.
Secondary antibody: HRP Goat Anti-Rabbit IgG (H+L) (AS014) at 1:10000 dilution.
Lysates/proteins: 25µg per lane.
Blocking buffer: 3% nonfat dry milk in TBST.
Detection: ECL Enhanced Kit (RM00021).
Exposure time: 180s.