

# ZBTB7A/FBI-1/LRF Rabbit mAb

Catalog No.: A19785 **Recombinant** **1 Publications**

## Basic Information

### Observed MW

70kDa

### Calculated MW

61kDa

### Category

Primary antibody

### Applications

WB,IHC-P,IF/ICC,ELISA

### Cross-Reactivity

Human

### CloneNo number

ARC2320

## Background

Enables several functions, including SMAD binding activity; androgen receptor binding activity; and transcription corepressor binding activity. Involved in several processes, including erythrocyte maturation; negative regulation of signal transduction; and regulation of nucleobase-containing compound metabolic process. Located in cytoplasm and nucleus. Colocalizes with DNA-dependent protein kinase complex and NuRD complex.

## Recommended Dilutions

<b>WB</b>	1:1000 - 1:6000
<b>IHC-P</b>	1:100 - 1:1000
<b>IF/ICC</b>	1:200 - 1:2000
<b>ELISA</b>	Recommended starting concentration is 1 µg/mL. Please optimize the concentration based on your specific assay requirements.

## Contact

☎	400-999-6126
✉	cn.market@abclonal.com.cn
🌐	www.abclonal.com.cn

## Immunogen Information

<b>Gene ID</b>	<b>Swiss Prot</b>
51341	O95365

### Immunogen

Synthetic peptide. This information is considered to be commercially sensitive.

### Synonyms

LRF; FBI1; FBI-1; TIP21; ZBTB7; MNDLFH; ZNF857A; pokemon; ZBTB7A/FBI-1/LRF

## Product Information

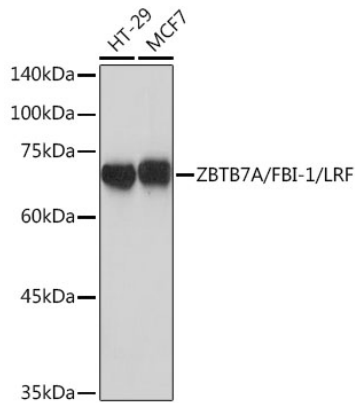
<b>Source</b>	<b>Isotype</b>	<b>Purification</b>
Rabbit	IgG	Affinity purification

### Storage

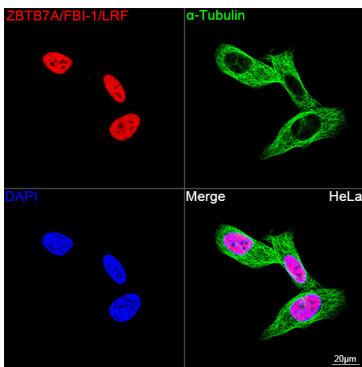
Store at -20°C. Avoid freeze / thaw cycles.

Buffer: PBS containing 50% glycerol and 0.05% BSA, preserved with proclin300 or sodium azide (as specified on the Certificate of Analysis), pH 7.3.

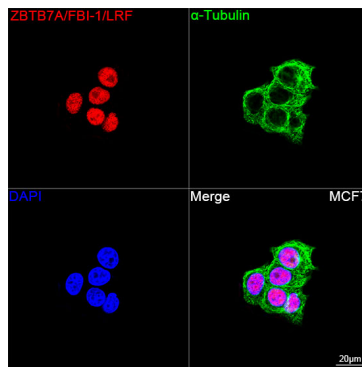
## Validation Data



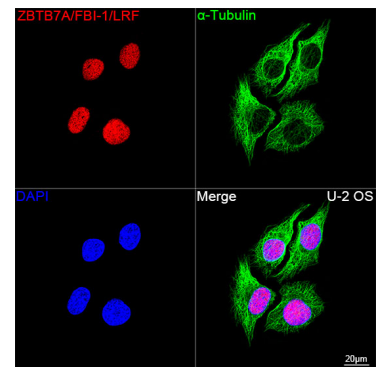
Western blot analysis of various lysates using ZBTB7A/FBI-1/LRF Rabbit mAb (A19785) at 1:1000 dilution. Secondary antibody: HRP-conjugated Goat anti-Rabbit IgG (H+L) (AS014) at 1:10000 dilution. Lysates/proteins: 25µg per lane. Blocking buffer: 3% nonfat dry milk in TBST. Detection: ECL Basic Kit (RM00020). Exposure time: 1s.



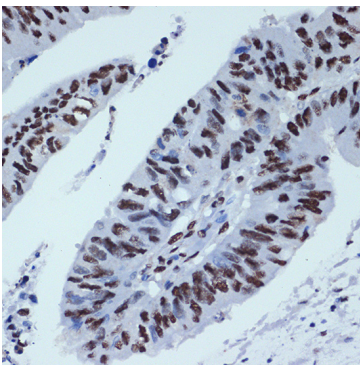
Confocal imaging of HeLa cells using ZBTB7A/FBI-1/LRF Rabbit mAb (A19785, dilution 1:200) followed by a further incubation with Cy3 Goat Anti-Rabbit IgG (H+L) (AS007, dilution 1:500) (Red). The cells were counterstained with α-Tubulin Mouse mAb (AC012, dilution 1:400) followed by incubation with ABflo® 488-conjugated Goat Anti-Mouse IgG (H+L) Ab (AS076, dilution 1:500) (Green). DAPI was used for nuclear staining (Blue). Objective: 100x.



Confocal imaging of MCF7 cells using ZBTB7A/FBI-1/LRF Rabbit mAb (A19785, dilution 1:200) followed by a further incubation with Cy3 Goat Anti-Rabbit IgG (H+L) (AS007, dilution 1:500) (Red). The cells were counterstained with α-Tubulin Mouse mAb (AC012, dilution 1:400) followed by incubation with ABflo® 488-conjugated Goat Anti-Mouse IgG (H+L) Ab (AS076, dilution 1:500) (Green). DAPI was used for nuclear staining (Blue). Objective: 100x.



Confocal imaging of U-2 OS cells using ZBTB7A/FBI-1/LRF Rabbit mAb (A19785, dilution 1:200) followed by a further incubation with Cy3 Goat Anti-Rabbit IgG (H+L) (AS007, dilution 1:500) (Red). The cells were counterstained with α-Tubulin Mouse mAb (AC012, dilution 1:400) followed by incubation with ABflo® 488-conjugated Goat Anti-Mouse IgG (H+L) Ab (AS076, dilution 1:500) (Green). DAPI was used for nuclear staining (Blue). Objective: 100x.



Immunohistochemistry analysis of paraffin-embedded Human colon carcinoma using ZBTB7A/FBI-1/LRF Rabbit mAb (A19785) at dilution of 1:100 (40x lens). Microwave antigen retrieval performed with 0.01M Tris/EDTA Buffer (pH 9.0) prior to IHC staining.