

# CDC40 Rabbit mAb

Catalog No.: A19794 **Recombinant**

## Basic Information

### Observed MW

75kDa

### Calculated MW

66kDa

### Category

Primary antibody

### Applications

ELISA, WB, IHC-P

### Cross-Reactivity

Human, Mouse, Rat

### CloneNo number

ARC2321

## Background

Pre-mRNA splicing occurs in two sequential transesterification steps. The protein encoded by this gene is found to be essential for the catalytic step II in pre-mRNA splicing process. It is found in the spliceosome, and contains seven WD repeats, which function in protein-protein interactions. This protein has a sequence similarity to yeast Prp17 protein, which functions in two different cellular processes: pre-mRNA splicing and cell cycle progression. It suggests that this protein may play a role in cell cycle progression.

## Recommended Dilutions

<b>WB</b>	1:500 - 1:2000
<b>IHC-P</b>	1:50 - 1:200

## Immunogen Information

### Gene ID

51362

### Swiss Prot

O60508

### Immunogen

A synthetic peptide corresponding to a sequence within amino acids 1-100 of human CDC40 (O60508).

### Synonyms

EHB3; PCH15; PRP17; PRPF17; CDC40

## Contact

☎ | 400-999-6126

✉ | [cn.market@abclonal.com.cn](mailto:cn.market@abclonal.com.cn)

🌐 | [www.abclonal.com.cn](http://www.abclonal.com.cn)

## Product Information

### Source

Rabbit

### Isotype

IgG

### Purification

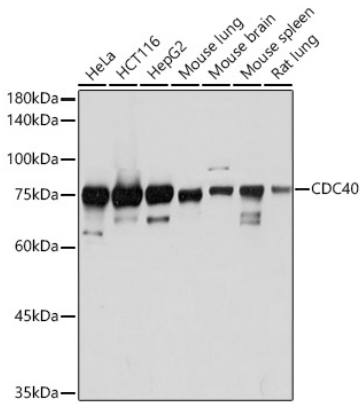
Affinity purification

### Storage

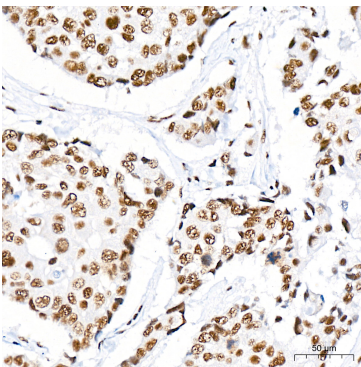
Store at -20°C. Avoid freeze / thaw cycles.

Buffer: PBS with 0.02% sodium azide, 0.05% BSA, 50% glycerol, pH7.3.

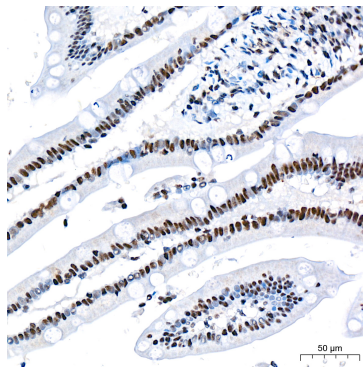
## Validation Data



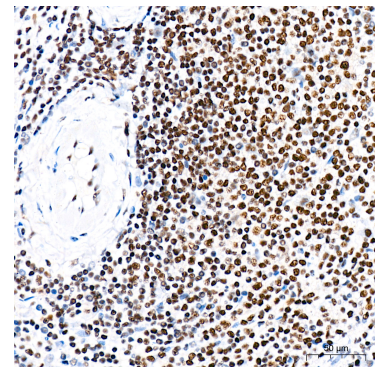
Western blot analysis of various lysates using CDC40 Rabbit mAb (A19794) at 1:1000 dilution. Secondary antibody: HRP Goat Anti-Rabbit IgG (H+L) (AS014) at 1:10000 dilution. Lysates/proteins: 25µg per lane. Blocking buffer: 3% nonfat dry milk in TBST. Detection: ECL Basic Kit (RM00020). Exposure time: 10s.



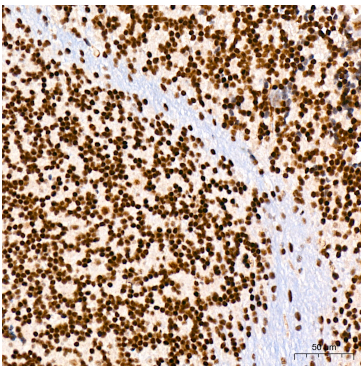
Immunohistochemistry analysis of CDC40 in paraffin-embedded human breast cancer tissue using CDC40 Rabbit mAb (A19794) at a dilution of 1:200 (40x lens). High pressure antigen retrieval was performed with 0.01 M citrate buffer (pH 6.0) prior to IHC staining.



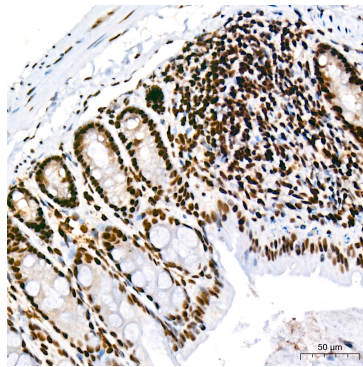
Immunohistochemistry analysis of CDC40 in paraffin-embedded human small intestine tissue using CDC40 Rabbit mAb (A19794) at a dilution of 1:200 (40x lens). High pressure antigen retrieval was performed with 0.01 M citrate buffer (pH 6.0) prior to IHC staining.



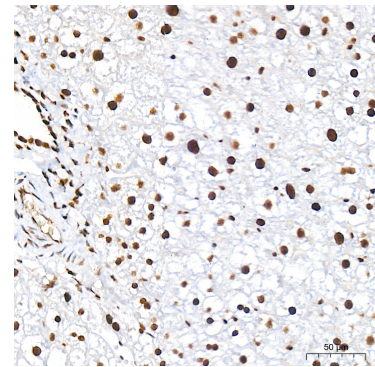
Immunohistochemistry analysis of CDC40 in paraffin-embedded human spleen tissue using CDC40 Rabbit mAb (A19794) at a dilution of 1:200 (40x lens). High pressure antigen retrieval was performed with 0.01 M citrate buffer (pH 6.0) prior to IHC staining.



Immunohistochemistry analysis of CDC40 in paraffin-embedded mouse brain tissue using CDC40 Rabbit mAb (A19794) at a dilution of 1:200 (40x lens). High pressure antigen retrieval was performed with 0.01 M citrate buffer (pH 6.0) prior to IHC staining.

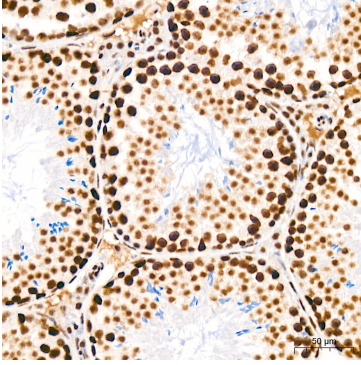


Immunohistochemistry analysis of CDC40 in paraffin-embedded mouse colon tissue using CDC40 Rabbit mAb (A19794) at a dilution of 1:200 (40x lens). High pressure antigen retrieval was performed with 0.01 M citrate buffer (pH 6.0) prior to IHC staining.

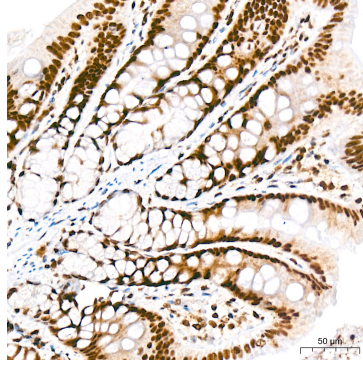


Immunohistochemistry analysis of CDC40 in paraffin-embedded mouse liver tissue using CDC40 Rabbit mAb (A19794) at a dilution of 1:200 (40x lens). High pressure antigen retrieval was performed with 0.01 M citrate buffer (pH 6.0) prior to IHC staining.

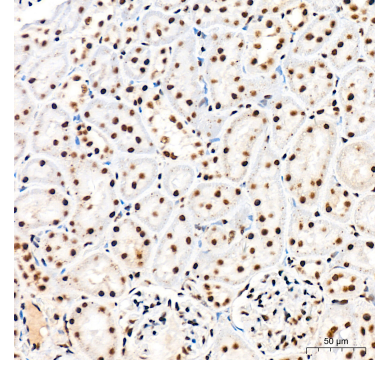
## Validation Data



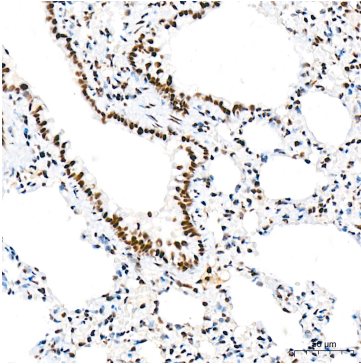
Immunohistochemistry analysis of CDC40 in paraffin-embedded mouse testis tissue using CDC40 Rabbit mAb (A19794) at a dilution of 1:200 (40x lens). High pressure antigen retrieval was performed with 0.01 M citrate buffer (pH 6.0) prior to IHC staining.



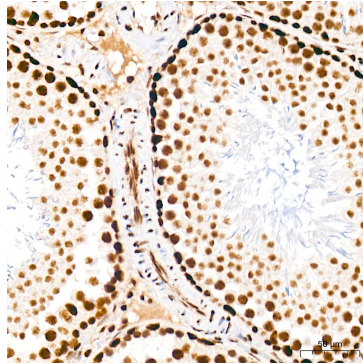
Immunohistochemistry analysis of CDC40 in paraffin-embedded rat colon tissue using CDC40 Rabbit mAb (A19794) at a dilution of 1:200 (40x lens). High pressure antigen retrieval was performed with 0.01 M citrate buffer (pH 6.0) prior to IHC staining.



Immunohistochemistry analysis of CDC40 in paraffin-embedded rat kidney tissue using CDC40 Rabbit mAb (A19794) at a dilution of 1:200 (40x lens). High pressure antigen retrieval was performed with 0.01 M citrate buffer (pH 6.0) prior to IHC staining.



Immunohistochemistry analysis of CDC40 in paraffin-embedded rat lung tissue using CDC40 Rabbit mAb (A19794) at a dilution of 1:200 (40x lens). High pressure antigen retrieval was performed with 0.01 M citrate buffer (pH 6.0) prior to IHC staining.



Immunohistochemistry analysis of CDC40 in paraffin-embedded rat testis tissue using CDC40 Rabbit mAb (A19794) at a dilution of 1:200 (40x lens). High pressure antigen retrieval was performed with 0.01 M citrate buffer (pH 6.0) prior to IHC staining.