

Renalase Rabbit mAb

Catalog No.: A19797 **Recombinant**

Basic Information

Observed MW

40kDa

Calculated MW

38kDa

Category

Primary antibody

Applications

ELISA, WB

Cross-Reactivity

Mouse, Rat

CloneNo number

ARC2324

Background

Enables several functions, including NADH binding activity; epinephrine binding activity; and monoamine oxidase activity. Involved in negative regulation of blood pressure and negative regulation of heart rate. Located in extracellular region. Implicated in essential hypertension and hypertension. Biomarker of end stage renal disease.

Recommended Dilutions

WB 1:500 - 1:1000

Immunogen Information

Gene ID

55328

Swiss Prot

Q5VYX0

Immunogen

A synthetic peptide corresponding to a sequence within amino acids 1-100 of human Renalase (Q5VYX0).

Synonyms

C10orf59; RENALASE; RNLS; Renalase

Contact

☎ | 400-999-6126

✉ | cn.market@abclonal.com.cn

🌐 | www.abclonal.com.cn

Product Information

Source

Rabbit

Isotype

IgG

Purification

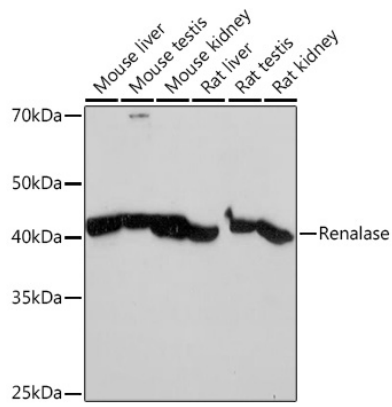
Affinity purification

Storage

Store at -20°C. Avoid freeze / thaw cycles.

Buffer: PBS with 0.02% sodium azide, 0.05% BSA, 50% glycerol, pH7.3.

Validation Data



Western blot analysis of extracts of various cell lines, using Renalase Rabbit mAb (A19797) at 1:1000 dilution.

Secondary antibody: HRP Goat Anti-Rabbit IgG (H+L) (AS014) at 1:10000 dilution.

Lysates/proteins: 25µg per lane.

Blocking buffer: 3% nonfat dry milk in TBST.

Detection: ECL Basic Kit (RM00020).

Exposure time: 10s.