

# Musashi-2 (MSI2) Rabbit mAb

Catalog No.: A19814 **Recombinant**

## Basic Information

### Observed MW

36kDa

### Calculated MW

35kDa

### Category

Primary antibody

### Applications

ELISA, WB, IHC-P

### Cross-Reactivity

Human, Mouse, Rat

### CloneNo number

ARC2341

## Background

This gene encodes an RNA-binding protein that is a member of the Musashi protein family. The encoded protein is transcriptional regulator that targets genes involved in development and cell cycle regulation. Mutations in this gene are associated with poor prognosis in certain types of cancers. This gene has also been shown to be rearranged in certain cancer cells.

## Recommended Dilutions

WB 1:500 - 1:1000

IHC-P 1:50 - 1:200

## Immunogen Information

### Gene ID

124540

### Swiss Prot

Q96DH6

### Immunogen

A synthetic peptide corresponding to a sequence within amino acids 200-300 of human Musashi-2 (MSI2) (Q96DH6).

### Synonyms

MSI2H; Musashi-2 (MSI2)

## Contact

☎ | 400-999-6126

✉ | [cn.market@abclonal.com.cn](mailto:cn.market@abclonal.com.cn)

🌐 | [www.abclonal.com.cn](http://www.abclonal.com.cn)

## Product Information

### Source

Rabbit

### Isotype

IgG

### Purification

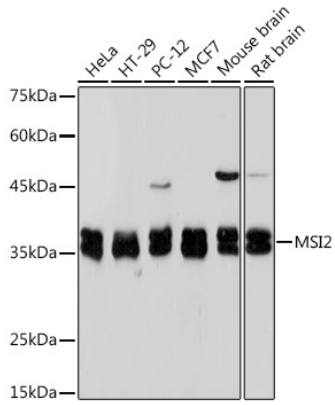
Affinity purification

### Storage

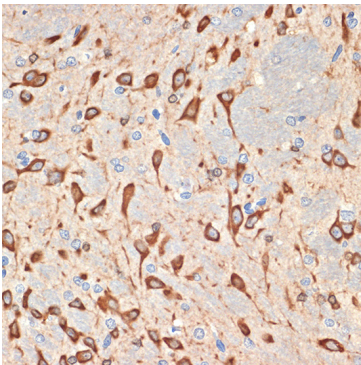
Store at -20°C. Avoid freeze / thaw cycles.

Buffer: PBS with 0.02% sodium azide, 0.05% BSA, 50% glycerol, pH7.3.

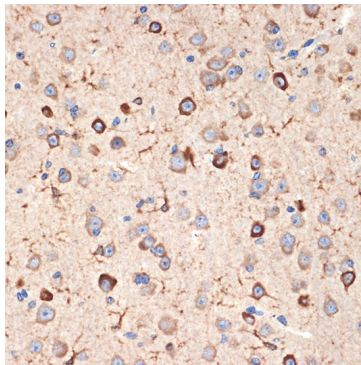
## Validation Data



Western blot analysis of various lysates using Musashi-2 (Musashi-2 (MSI2)) Rabbit mAb (A19814) at 1:1000 dilution.  
Secondary antibody: HRP Goat Anti-Rabbit IgG (H+L) (AS014) at 1:10000 dilution.  
Lysates/proteins: 25µg per lane.  
Blocking buffer: 3% nonfat dry milk in TBST.  
Detection: ECL Basic Kit (RM00020).  
Exposure time: 5s.



Immunohistochemistry analysis of paraffin-embedded rat brain using Musashi-2 (Musashi-2 (MSI2)) Rabbit mAb (A19814) at dilution of 1:100 (40x lens). Perform microwave antigen retrieval with 10 mM Tris/EDTA buffer pH 9.0 before commencing with IHC staining protocol.



Immunohistochemistry analysis of paraffin-embedded mouse brain using Musashi-2 (Musashi-2 (MSI2)) Rabbit mAb (A19814) at dilution of 1:100 (40x lens). Perform microwave antigen retrieval with 10 mM Tris/EDTA buffer pH 9.0 before commencing with IHC staining protocol.