

LSD2/KDM1B/AOF1 Rabbit mAb

Catalog No.: A19820 **Recombinant** **1 Publications**

Basic Information

Observed MW

92kDa

Calculated MW

92kDa

Category

Primary antibody

Applications

ELISA, WB

Cross-Reactivity

Human, Mouse, Rat

CloneNo number

ARC2347

Background

Flavin-dependent histone demethylases, such as KDM1B, regulate histone lysine methylation, an epigenetic mark that regulates gene expression and chromatin function (Karytinis et al., 2009 [PubMed 19407342]).

Recommended Dilutions

WB 1:500 - 1:1000

Immunogen Information

Gene ID

221656

Swiss Prot

Q8NB78

Immunogen

A synthetic peptide corresponding to a sequence within amino acids 1-100 of human LSD2/KDM1B/AOF1 (NP_694587.3).

Synonyms

AOF1; LSD2; C6orf193; LSD2/KDM1B/AOF1

Contact

 | 400-999-6126

 | cn.market@abclonal.com.cn

 | www.abclonal.com.cn

Product Information

Source

Rabbit

Isotype

IgG

Purification

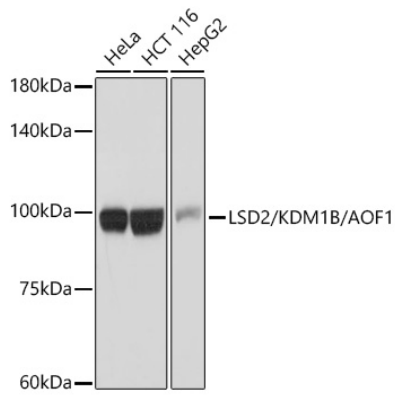
Affinity purification

Storage

Store at -20°C. Avoid freeze / thaw cycles.

Buffer: PBS with 0.02% sodium azide, 0.05% BSA, 50% glycerol, pH7.3.

Validation Data



Western blot analysis of extracts of various cell lines, using LSD2/AOF1 antibody (A19820) at 1:1000 dilution.

Secondary antibody: HRP Goat Anti-Rabbit IgG (H+L) (AS014) at 1:10000 dilution.

Lysates/proteins: 25µg per lane.

Blocking buffer: 3% nonfat dry milk in TBST.

Detection: ECL Basic Kit (RM00020).

Exposure time: 10s.