

# CHX10 Rabbit mAb

Catalog No.: A19828 **Recombinant**

## Basic Information

### Observed MW

43kDa

### Calculated MW

39kDa

### Category

Primary antibody

### Applications

ELISA, WB

### Cross-Reactivity

Mouse, Rat

### CloneNo number

ARC2354

## Background

This gene encodes a homeobox protein originally described as a retina-specific transcription factor. Mutations in this gene are associated with microphthalmia, cataracts and iris abnormalities.

## Recommended Dilutions

WB 1:500 - 1:2000

## Immunogen Information

### Gene ID

338917

### Swiss Prot

P58304

### Immunogen

A synthetic peptide corresponding to a sequence within amino acids 262-361 of human CHX10 (P58304).

### Synonyms

RET1; CHX10; HOX10; MCOP2; MCOPCB3

## Contact

☎ | 400-999-6126

✉ | [cn.market@abclonal.com.cn](mailto:cn.market@abclonal.com.cn)

🌐 | [www.abclonal.com.cn](http://www.abclonal.com.cn)

## Product Information

### Source

Rabbit

### Isotype

IgG

### Purification

Affinity purification

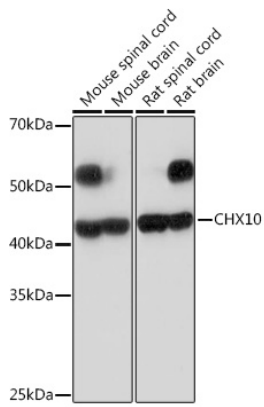
### Storage

Store at -20°C. Avoid freeze / thaw cycles.

Buffer: PBS with 0.02% sodium azide, 0.05% BSA, 50% glycerol, pH7.3.

## Validation Data

---



Western blot analysis of extracts of various lysates, using CHX10 Rabbit mAb (A19828) at 1:1000 dilution.  
Secondary antibody: HRP Goat Anti-Rabbit IgG (H+L) (AS014) at 1:10000 dilution.  
Lysates/proteins: 25µg per lane.  
Blocking buffer: 3% nonfat dry milk in TBST.  
Detection: ECL Basic Kit (RM00020).  
Exposure time: 180s.