

# IPO5 Rabbit pAb

**Catalog No.: A1984**

## Basic Information

**Observed MW**

124kDa

**Calculated MW**

124kDa

**Category**

Primary antibody

**Applications**

ELISA,WB

**Cross-Reactivity**

Human, Mouse, Rat

## Background

Nucleocytoplasmic transport, a signal- and energy-dependent process, takes place through nuclear pore complexes embedded in the nuclear envelope. The import of proteins containing a nuclear localization signal (NLS) requires the NLS import receptor, a heterodimer of importin alpha and beta subunits also known as karyopherins. Importin alpha binds the NLS-containing cargo in the cytoplasm and importin beta docks the complex at the cytoplasmic side of the nuclear pore complex. In the presence of nucleoside triphosphates and the small GTP binding protein Ran, the complex moves into the nuclear pore complex and the importin subunits dissociate. Importin alpha enters the nucleoplasm with its passenger protein and importin beta remains at the pore. Interactions between importin beta and the FG repeats of nucleoporins are essential in translocation through the pore complex. The protein encoded by this gene is a member of the importin beta family.

## Recommended Dilutions

**WB** 1:500 - 1:1000

## Immunogen Information

**Gene ID**

3843

**Swiss Prot**

O00410

**Immunogen**

Recombinant fusion protein containing a sequence corresponding to amino acids 20-300 of human IPO5 (NP\_002262.3).

**Synonyms**

IMB3; Pse1; imp5; KPNB3; RANBP5; IPO5

## Contact

 | 400-999-6126 | [cn.market@abclonal.com.cn](mailto:cn.market@abclonal.com.cn) | [www.abclonal.com.cn](http://www.abclonal.com.cn)

## Product Information

**Source**

Rabbit

**Isotype**

IgG

**Purification**

Affinity purification

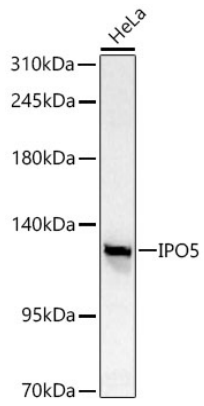
**Storage**

Store at -20°C. Avoid freeze / thaw cycles.

Buffer: PBS with 0.02% sodium azide,50% glycerol,pH7.3.

## Validation Data

---



Western blot analysis of lysates from HeLa cells using IPO5 Rabbit pAb(A1984) at 1:1000 dilution.  
Secondary antibody:HRP Goat Anti-Rabbit IgG (H+L)(AS014) at 1:10000 dilution.  
Lysates/proteins: 25 µg per lane.  
Blocking buffer: 3% nonfat dry milk in TBST.  
Detection:ECL Basic Kit (RM00020).  
Exposure time:30s.