

[KO Validated] GCN1L1 Rabbit pAb

Catalog No.: A19851 **KO Validated** **1 Publications**

Basic Information

Observed MW

275kDa

Calculated MW

293kDa

Category

Primary antibody

Applications

WB,ELISA

Cross-Reactivity

Human

Background

Enables RNA binding activity and cadherin binding activity. Predicted to be involved in cellular response to leucine starvation and positive regulation of transcription from RNA polymerase II promoter in response to stress. Located in cytosol.

Recommended Dilutions

WB 1:500 - 1:2000

ELISA Recommended starting concentration is 1 µg/mL. Please optimize the concentration based on your specific assay requirements.

Immunogen Information

Gene ID

10985

Swiss Prot

Q92616

Immunogen

Recombinant protein (or fragment). This information is considered to be commercially sensitive.

Synonyms

GCN1L; GCN1L1; PRIC295; L1

Contact

 | 400-999-6126

 | cn.market@abclonal.com.cn

 | www.abclonal.com.cn

Product Information

Source

Rabbit

Isotype

IgG

Purification

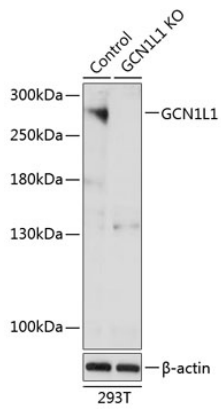
Affinity purification

Storage

Store at -20°C. Avoid freeze / thaw cycles.

Buffer: PBS with 0.01% thimerosal, 50% glycerol, pH7.3.

Validation Data



Western blot analysis of lysates from wild type (WT) and GCN1L1 knockout (KO) 293T cells, using [KO Validated] GCN1L1 Rabbit pAb (A19851) at 1:3000 dilution.

Secondary antibody: HRP-conjugated Goat anti-Rabbit IgG (H+L) (AS014) at 1:10000 dilution.

Lysates/proteins: 25 μ g per lane.

Blocking buffer: 3% nonfat dry milk in TBST.

Detection: ECL Basic Kit (RM00020).

Exposure time: 30S.