

[KO Validated] NRBF2 Rabbit pAb

Catalog No.: A19856 **KO Validated**

Basic Information

Observed MW

40kDa

Calculated MW

32kDa

Category

Primary antibody

Applications

ELISA, WB

Cross-Reactivity

Human, Mouse, Rat

Background

Involved in autophagy. Located in cytoplasm. Colocalizes with phosphatidylinositol 3-kinase complex, class III.

Recommended Dilutions

WB 1:500 - 1:2000

Immunogen Information

Gene ID

29982

Swiss Prot

Q96F24

Immunogen

Recombinant fusion protein containing a sequence corresponding to amino acids 10-220 of human NRBF2 (NP_110386.2).

Synonyms

COPR; COPR1; COPR2; NRBF-2; F2

Contact

☎ | 400-999-6126

✉ | cn.market@abclonal.com.cn

🌐 | www.abclonal.com.cn

Product Information

Source

Rabbit

Isotype

IgG

Purification

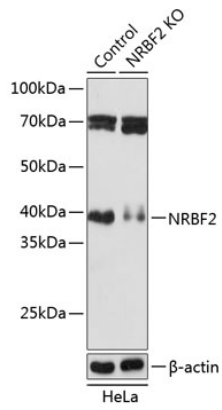
Affinity purification

Storage

Store at -20°C. Avoid freeze / thaw cycles.

Buffer: PBS with 0.01% thimerosal, 50% glycerol, pH7.3.

Validation Data



Western blot analysis of lysates from wild type (WT) and NRBF2 knockout (KO) HeLa cells, using [KO Validated] NRBF2 Rabbit pAb (A19856) at 1:1000 dilution.

Secondary antibody: HRP Goat Anti-Rabbit IgG (H+L) (AS014) at 1:10000 dilution.

Lysates/proteins: 25µg per lane.

Blocking buffer: 3% nonfat dry milk in TBST.

Detection: ECL Basic Kit (RM00020).

Exposure time: 5s.