

# [KO Validated] ESD Rabbit pAb

Catalog No.: A19863 **KO Validated**

## Basic Information

### Observed MW

32kDa

### Calculated MW

31kDa

### Category

Primary antibody

### Applications

ELISA, WB

### Cross-Reactivity

Human, Mouse

## Background

This gene encodes a serine hydrolase that belongs to the esterase D family. The encoded enzyme is active toward numerous substrates including O-acetylated sialic acids, and it may be involved in the recycling of sialic acids. This gene is used as a genetic marker for retinoblastoma and Wilson's disease.

## Recommended Dilutions

WB 1:500 - 1:2000

## Immunogen Information

### Gene ID

2098

### Swiss Prot

P10768

### Immunogen

Recombinant fusion protein containing a sequence corresponding to amino acids 1-282 of human ESD (NP\_001975.1).

### Synonyms

FGH; SD

## Contact

☎ | 400-999-6126

✉ | [cn.market@abclonal.com.cn](mailto:cn.market@abclonal.com.cn)

🌐 | [www.abclonal.com.cn](http://www.abclonal.com.cn)

## Product Information

### Source

Rabbit

### Isotype

IgG

### Purification

Affinity purification

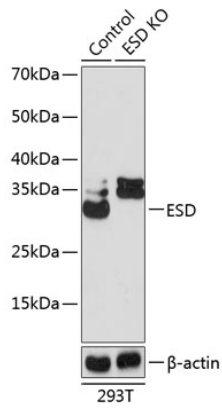
### Storage

Store at -20°C. Avoid freeze / thaw cycles.

Buffer: PBS with 0.01% thimerosal, 50% glycerol, pH7.3.

## Validation Data

---



Western blot analysis of lysates from wild type (WT) and ESD knockout (KO) 293T cells, using [KO Validated] ESD Rabbit pAb (A19863) at 1:1000 dilution.

Secondary antibody: HRP Goat Anti-Rabbit IgG (H+L) (AS014) at 1:10000 dilution.

Lysates/proteins: 25 $\mu$ g per lane.

Blocking buffer: 3% nonfat dry milk in TBST.

Detection: ECL Basic Kit (RM00020).

Exposure time: 90s.