

# [KO Validated] SIPA1 Rabbit pAb

Catalog No.: A19867 **KO Validated** **1 Publications**

## Basic Information

### Observed MW

130kDa

### Calculated MW

112kDa

### Category

Primary antibody

### Applications

ELISA, WB

### Cross-Reactivity

Human, Mouse

## Background

The product of this gene is a mitogen induced GTPase activating protein (GAP). It exhibits a specific GAP activity for Ras-related regulatory proteins Rap1 and Rap2, but not for Ran or other small GTPases. This protein may also hamper mitogen-induced cell cycle progression when abnormally or prematurely expressed. It is localized to the perinuclear region. Two alternatively spliced variants encoding the same isoform have been characterized to date.

## Recommended Dilutions

WB 1:500 - 1:2000

## Immunogen Information

### Gene ID

6494

### Swiss Prot

Q96FS4

### Immunogen

Recombinant fusion protein containing a sequence corresponding to amino acids 763-1042 of human SIPA1 (NP\_694985.29).

### Synonyms

SPA1; A1

## Contact

 | 400-999-6126

 | [cn.market@abclonal.com.cn](mailto:cn.market@abclonal.com.cn)

 | [www.abclonal.com.cn](http://www.abclonal.com.cn)

## Product Information

### Source

Rabbit

### Isotype

IgG

### Purification

Affinity purification

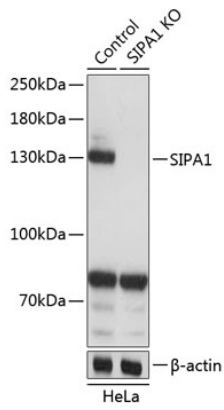
### Storage

Store at -20°C. Avoid freeze / thaw cycles.

Buffer: PBS with 0.01% thimerosal, 50% glycerol, pH7.3.

## Validation Data

---



Western blot analysis of lysates from wild type (WT) and SIPA1 knockout (KO) HeLa cells, using [KO Validated] SIPA1 Rabbit pAb (A19867) at 1:3000 dilution.  
Secondary antibody: HRP Goat Anti-Rabbit IgG (H+L) (AS014) at 1:10000 dilution.  
Lysates/proteins: 25 $\mu$ g per lane.  
Blocking buffer: 3% nonfat dry milk in TBST.  
Detection: ECL Basic Kit (RM00020).  
Exposure time: 1s.