

[KO Validated] GBP2 Rabbit pAb

Catalog No.: A19874 **KO Validated**

Basic Information

Observed MW

67kDa

Calculated MW

67kDa

Category

Primary antibody

Applications

ELISA, WB

Cross-Reactivity

Human

Background

This gene belongs to the guanine-binding protein (GBP) family, which includes interferon-induced proteins that can bind to guanine nucleotides (GMP, GDP and GTP). The encoded protein is a GTPase which hydrolyzes GTP, predominantly to GDP. The protein may play a role as a marker of squamous cell carcinomas.

Recommended Dilutions

WB 1:500 - 1:2000

Immunogen Information

Gene ID

2634

Swiss Prot

P32456

Immunogen

Recombinant fusion protein containing a sequence corresponding to amino acids 410-520 of human GBP2 (NP_004111.2).

Synonyms

GBP2; P2

Contact

 | 400-999-6126

 | cn.market@abclonal.com.cn

 | www.abclonal.com.cn

Product Information

Source

Rabbit

Isotype

IgG

Purification

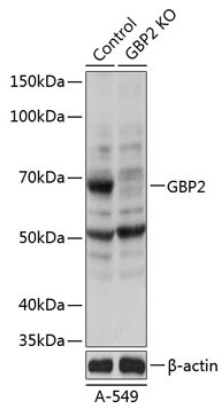
Affinity purification

Storage

Store at -20°C. Avoid freeze / thaw cycles.

Buffer: PBS with 0.01% thimerosal, 50% glycerol, pH7.3.

Validation Data



Western blot analysis of lysates from wild type (WT) and GBP2 knockout (KO) A-549 cells, using [KO Validated] GBP2 Rabbit pAb (A19874) at 1:1000 dilution.

Secondary antibody: HRP Goat Anti-Rabbit IgG (H+L) (AS014) at 1:10000 dilution.

Lysates/proteins: 25µg per lane.

Blocking buffer: 3% nonfat dry milk in TBST.

Detection: ECL Basic Kit (RM00020).

Exposure time: 1s.