

S100A10 Rabbit pAb

Catalog No.: A1987SP **4 Publications**

Basic Information

Observed MW

11 kDa

Calculated MW

11 kDa

Category

Primary antibody

Applications

WB,IF-P,IHC-P,ELISA

Cross-Reactivity

Human, Mouse, Rat

Background

The protein encoded by this gene is a member of the S100 family of proteins containing 2 EF-hand calcium-binding motifs. S100 proteins are localized in the cytoplasm and/or nucleus of a wide range of cells, and involved in the regulation of a number of cellular processes such as cell cycle progression and differentiation. S100 genes include at least 13 members which are located as a cluster on chromosome 1q21. This protein may function in exocytosis and endocytosis.

Recommended Dilutions

WB 1:10000 - 1:50000

IF-P 1:100 - 1:400

IHC-P 1:5000 - 1:20000

ELISA

Recommended starting concentration is 1 µg/mL. Please optimize the concentration based on your specific assay requirements. For high-ratio antibody dilutions (≥1:10000) a sequential dilution method is strongly recommended to ensure measurement accuracy.

Immunogen Information

Gene ID

6281

Swiss Prot

P60903

Immunogen

This information is considered to be commercially sensitive.

Synonyms

42C; P11; p10; GP11; ANX2L; CAL1L; CLP11; Ca[1]; ANX2LG; S100A10

Product Information

Source

Rabbit

Isotype

IgG

Purification

Affinity purification

Storage

Store at -20°C. Avoid freeze / thaw cycles.

Buffer: PBS, pH 7.3, containing 50% glycerol. Preserved with Proclin300 or sodium azide.

May contain 0.05% BSA as specified on the Certificate of Analysis.

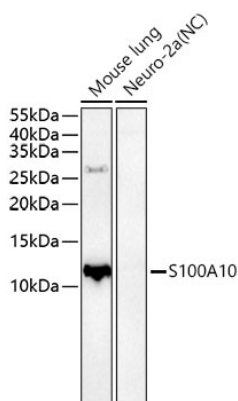
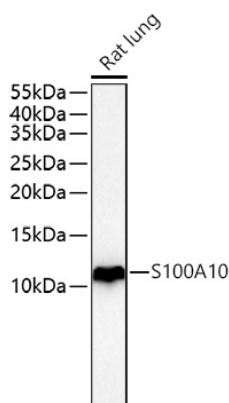
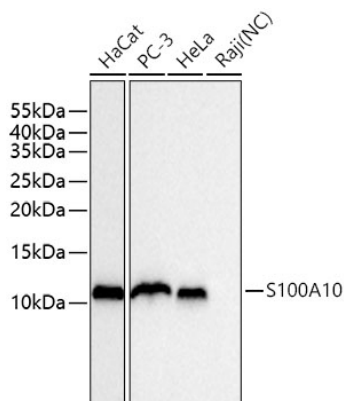
Contact

 | 400-999-6126

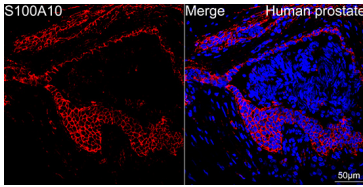
 | cn.market@abclonal.com.cn

 | www.abclonal.com.cn

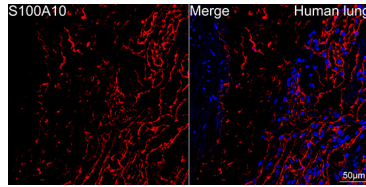
Validation Data



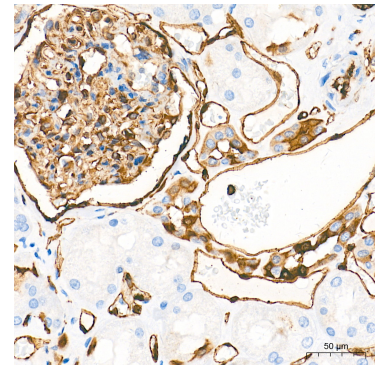
Validation Data



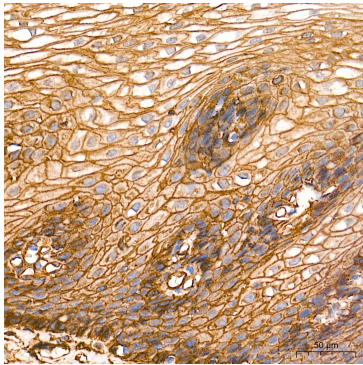
Confocal imaging of paraffin-embedded Human prostate tissue using S100A10 Rabbit pAb (A1987SP, dilution 1:200) followed by a further incubation with Cy3-conjugated Goat anti-Rabbit IgG (H+L) (AS007, dilution 1:500) (Red). DAPI was used for nuclear staining (Blue). High pressure antigen retrieval performed with 0.01M Citrate Buffer (pH 6.0) prior to IF staining. Objective: 40x.



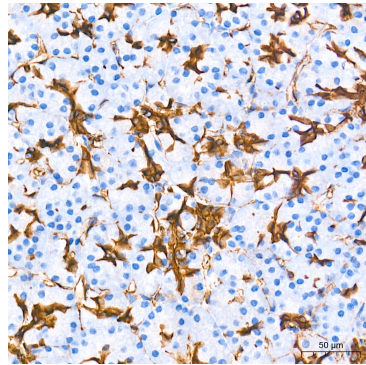
Confocal imaging of paraffin-embedded Human lung tissue using S100A10 Rabbit pAb (A1987SP, dilution 1:200) followed by a further incubation with Cy3-conjugated Goat anti-Rabbit IgG (H+L) (AS007, dilution 1:500) (Red). DAPI was used for nuclear staining (Blue). High pressure antigen retrieval performed with 0.01M Citrate Buffer (pH 6.0) prior to IF staining. Objective: 40x.



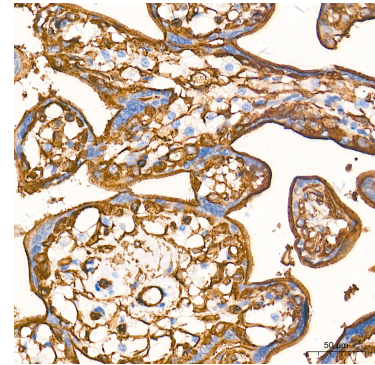
Immunohistochemistry analysis of paraffin-embedded Human kidney tissue using S100A10 Rabbit pAb (A1987SP) at a dilution of 1:7000 (40x lens). High pressure antigen retrieval performed with 0.01M Tris-EDTA Buffer (pH 9.0) prior to IHC staining.



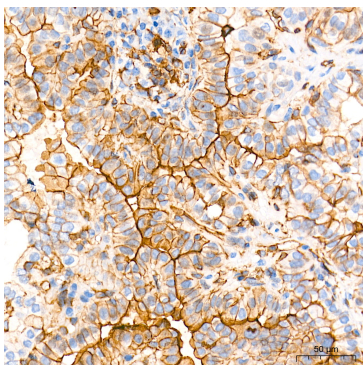
Immunohistochemistry analysis of paraffin-embedded Human esophagus tissue using S100A10 Rabbit pAb (A1987SP) at a dilution of 1:7000 (40x lens). High pressure antigen retrieval performed with 0.01M Tris-EDTA Buffer (pH 9.0) prior to IHC staining.



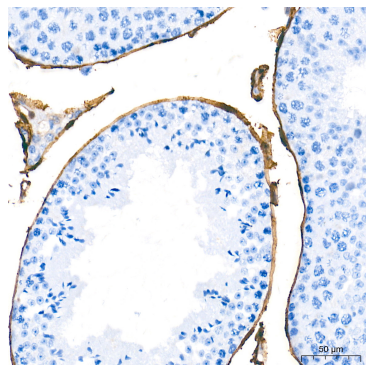
Immunohistochemistry analysis of paraffin-embedded Human pancreas tissue using S100A10 Rabbit pAb (A1987SP) at a dilution of 1:7000 (40x lens). High pressure antigen retrieval performed with 0.01M Tris-EDTA Buffer (pH 9.0) prior to IHC staining.



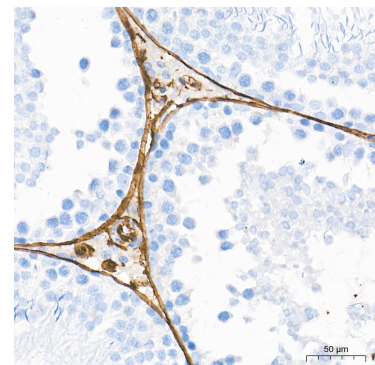
Immunohistochemistry analysis of paraffin-embedded Human placenta tissue using S100A10 Rabbit pAb (A1987SP) at a dilution of 1:7000 (40x lens). High pressure antigen retrieval performed with 0.01M Tris-EDTA Buffer (pH 9.0) prior to IHC staining.



Immunohistochemistry analysis of paraffin-embedded Human thyroid cancer tissue using S100A10 Rabbit pAb (A1987SP) at a dilution of 1:7000 (40x lens). High pressure antigen retrieval performed with 0.01M Tris-EDTA Buffer (pH 9.0) prior to IHC staining.



Immunohistochemistry analysis of paraffin-embedded Mouse testis tissue using S100A10 Rabbit pAb (A1987SP) at a dilution of 1:7000 (40x lens). High pressure antigen retrieval performed with 0.01M Tris-EDTA Buffer (pH 9.0) prior to IHC staining.



Immunohistochemistry analysis of paraffin-embedded Rat testis tissue using S100A10 Rabbit pAb (A1987SP) at a dilution of 1:7000 (40x lens). High pressure antigen retrieval performed with 0.01M Tris-EDTA Buffer (pH 9.0) prior to IHC staining.