

[KO Validated] NUP210 Rabbit pAb

Catalog No.: A19895 **KO** Validated

Basic Information

Observed MW

290kDa

Calculated MW

205kDa

Category

Primary antibody

Applications

ELISA, WB

Cross-Reactivity

Human, Mouse, Rat

Background

The nuclear pore complex is a massive structure that extends across the nuclear envelope, forming a gateway that regulates the flow of macromolecules between the nucleus and the cytoplasm. Nucleoporins are the main components of the nuclear pore complex in eukaryotic cells. The protein encoded by this gene is a membrane-spanning glycoprotein that is a major component of the nuclear pore complex. Multiple pseudogenes related to this gene are located on chromosome 3.

Recommended Dilutions

WB 1:1000 - 1:2000

Immunogen Information

Gene ID

23225

Swiss Prot

Q8TEM1

Immunogen

Recombinant fusion protein containing a sequence corresponding to amino acids 680-880 of human NUP210 (NP_079199.2).

Synonyms

GP210; POM210; 10

Contact

 | 400-999-6126

 | cn.market@abclonal.com.cn

 | www.abclonal.com.cn

Product Information

Source

Rabbit

Isotype

IgG

Purification

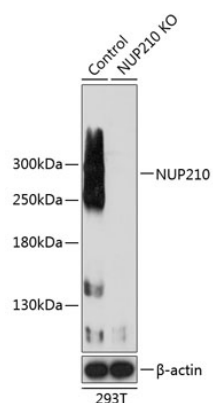
Affinity purification

Storage

Store at -20°C. Avoid freeze / thaw cycles.

Buffer: PBS with 0.01% thimerosal, 50% glycerol, pH7.3.

Validation Data



Western blot analysis of lysates from wild type (WT) and NUP210 knockout (KO) 293T cells, using [KO Validated] NUP210 Rabbit pAb (A19895) at 1:1000 dilution.

Secondary antibody: HRP Goat Anti-Rabbit IgG (H+L) (AS014) at 1:10000 dilution.

Lysates/proteins: 25µg per lane.

Blocking buffer: 3% nonfat dry milk in TBST.

Detection: ECL Basic Kit (RM00020).

Exposure time: 90s.