

[KO Validated] CCDC6 Rabbit pAb

Catalog No.: A19901 **KO Validated**

Basic Information

Observed MW

68kDa

Calculated MW

53kDa

Category

Primary antibody

Applications

ELISA, WB

Cross-Reactivity

Human, Mouse, Rat

Background

This gene encodes a coiled-coil domain-containing protein. The encoded protein is ubiquitously expressed and may function as a tumor suppressor. A chromosomal rearrangement resulting in the expression of a fusion gene containing a portion of this gene and the intracellular kinase-encoding domain of the ret proto-oncogene is the cause of thyroid papillary carcinoma.

Recommended Dilutions

WB 1:500 - 1:2000

Immunogen Information

Gene ID

8030

Swiss Prot

Q16204

Immunogen

Recombinant fusion protein containing a sequence corresponding to amino acids 55-222 of human CCDC6 (NP_005427.2).

Synonyms

H4; PTC; TPC; PTC1; TST1; D10S170; C6

Contact

 | 400-999-6126

 | cn.market@abclonal.com.cn

 | www.abclonal.com.cn

Product Information

Source

Rabbit

Isotype

IgG

Purification

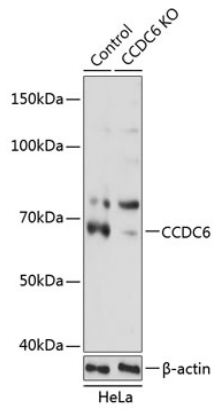
Affinity purification

Storage

Store at -20°C. Avoid freeze / thaw cycles.

Buffer: PBS with 0.01% thimerosal, 50% glycerol, pH7.3.

Validation Data



Western blot analysis of lysates from wild type (WT) and CCDC6 knockout (KO) HeLa cells, using [KO Validated] CCDC6 Rabbit pAb (A19901) at 1:1000 dilution.

Secondary antibody: HRP Goat Anti-Rabbit IgG (H+L) (AS014) at 1:10000 dilution.

Lysates/proteins: 25 μ g per lane.

Blocking buffer: 3% nonfat dry milk in TBST.

Detection: ECL Basic Kit (RM00020).

Exposure time: 1s.