

[KO Validated] ARMET/ARP/MANF Rabbit pAb

Catalog No.: A19923 **KO** Validated

Basic Information

Observed MW

16kDa

Calculated MW

21kDa

Category

Primary antibody

Applications

ELISA, WB

Cross-Reactivity

Human, Mouse, Rat

Background

The protein encoded by this gene is localized in the endoplasmic reticulum (ER) and golgi, and is also secreted. Reducing expression of this gene increases susceptibility to ER stress-induced death and results in cell proliferation. Activity of this protein is important in promoting the survival of dopaminergic neurons. The presence of polymorphisms in the N-terminal arginine-rich region, including a specific mutation that changes an ATG start codon to AGG, have been reported in a variety of solid tumors; however, these polymorphisms were later shown to exist in normal tissues and are thus no longer thought to be tumor-related.

Recommended Dilutions

WB 1:500 - 1:2000

Immunogen Information

Gene ID

7873

Swiss Prot

P55145

Immunogen

Recombinant fusion protein containing a sequence corresponding to amino acids 25-182 of human ARMET/ARP/MANF (NP_006001.4).

Synonyms

ARP; ARMET; NF

Contact

 | 400-999-6126 | cn.market@abclonal.com.cn | www.abclonal.com.cn

Product Information

Source

Rabbit

Isotype

IgG

Purification

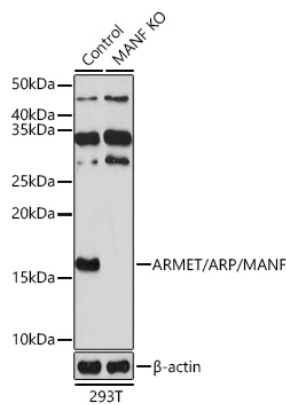
Affinity purification

Storage

Store at -20°C. Avoid freeze / thaw cycles.

Buffer: PBS with 0.05% proclin300, 50% glycerol, pH7.3.

Validation Data



Western blot analysis of extracts from normal (control) and ARMET/ARP/MANF knockout (KO) 293T cells, using ARMET/ARP/MANF antibody (A19923) at 1:500 dilution.
Secondary antibody: HRP Goat Anti-Rabbit IgG (H+L) (AS014) at 1:10000 dilution.
Lysates/proteins: 25 μ g per lane.
Blocking buffer: 3% nonfat dry milk in TBST.
Detection: ECL Basic Kit (RM00020).
Exposure time: 30S.