

# [KO Validated] PHKG2 Rabbit pAb

Catalog No.: A19934 **KO Validated**

## Basic Information

**Observed MW**

42kDa

**Calculated MW**

46kDa

**Category**

Primary antibody

**Applications**

ELISA,WB,IF/ICC

**Cross-Reactivity**

Human, Mouse, Rat

## Background

Phosphorylase kinase is a polymer of 16 subunits, four each of alpha, beta, gamma and delta. The alpha subunit includes the skeletal muscle and hepatic isoforms, encoded by two different genes. The beta subunit is the same in both the muscle and hepatic isoforms, and encoded by one gene. The gamma subunit also includes the skeletal muscle and hepatic isoforms, and the hepatic isoform is encoded by this gene. The delta subunit is a calmodulin and can be encoded by three different genes. The gamma subunits contain the active site of the enzyme, whereas the alpha and beta subunits have regulatory functions controlled by phosphorylation. The delta subunit mediates the dependence of the enzyme on calcium concentration. Mutations in this gene cause glycogen storage disease type 9C, also known as autosomal liver glycogenosis. Alternatively spliced transcript variants encoding different isoforms have been identified in this gene.

## Recommended Dilutions

<b>WB</b>	1:500 - 1:2000
<b>IF/ICC</b>	1:50 - 1:200

## Immunogen Information

**Gene ID**

5261

**Swiss Prot**

P15735

**Immunogen**

Recombinant fusion protein containing a sequence corresponding to amino acids 237-406 of human PHKG2 (NP\_000285.1).

**Synonyms**

GSD9C; G2

## Contact

 | 400-999-6126 | [cn.market@abclonal.com.cn](mailto:cn.market@abclonal.com.cn) | [www.abclonal.com.cn](http://www.abclonal.com.cn)

## Product Information

**Source**

Rabbit

**Isotype**

IgG

**Purification**

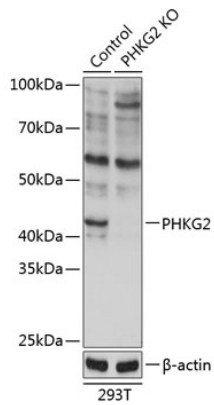
Affinity purification

**Storage**

Store at -20°C. Avoid freeze / thaw cycles.

Buffer: PBS with 0.01% thimerosal, 50% glycerol, pH7.3.

## Validation Data



Western blot analysis of lysates from wild type (WT) and PHKG2 knockout (KO) 293T cells, using [KO Validated] PHKG2 Rabbit pAb (A19934) at 1:1000 dilution.

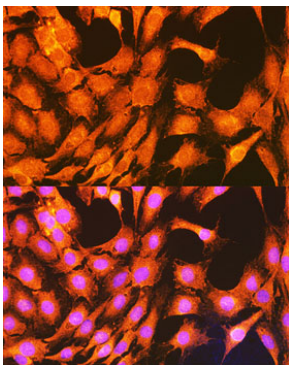
Secondary antibody: HRP Goat Anti-Rabbit IgG (H+L) (AS014) at 1:10000 dilution.

Lysates/proteins: 25µg per lane.

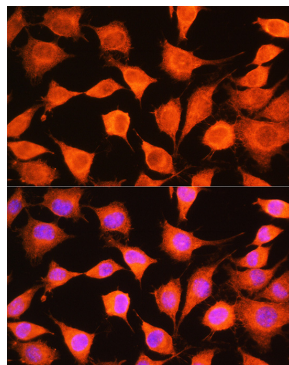
Blocking buffer: 3% nonfat dry milk in TBST.

Detection: ECL Basic Kit (RM00020).

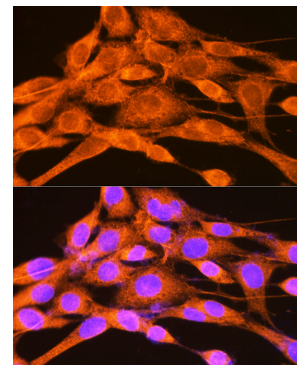
Exposure time: 1s.



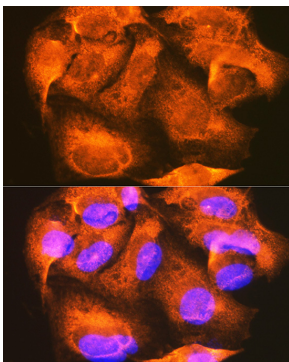
Immunofluorescence analysis of C6 cells using PHKG2 Rabbit pAb (A19934) at dilution of 1:100 (40x lens). Blue: DAPI for nuclear staining.



Immunofluorescence analysis of L929 cells using PHKG2 Rabbit pAb (A19934) at dilution of 1:100 (40x lens). Blue: DAPI for nuclear staining.



Immunofluorescence analysis of NIH-3T3 cells using PHKG2 Rabbit pAb (A19934) at dilution of 1:100 (40x lens). Blue: DAPI for nuclear staining.



Immunofluorescence analysis of U-2 OS cells using PHKG2 Rabbit pAb (A19934) at dilution of 1:100 (40x lens). Blue: DAPI for nuclear staining.