

[KO Validated] CLPP Rabbit pAb

Catalog No.: A19975 **KO** Validated

Basic Information

Observed MW

25kDa

Calculated MW

30kDa

Category

Primary antibody

Applications

ELISA, WB

Cross-Reactivity

Human, Mouse, Rat

Background

The protein encoded by this gene belongs to the peptidase family S14 and hydrolyzes proteins into small peptides in the presence of ATP and magnesium. The protein is transported into mitochondrial matrix and is associated with the inner mitochondrial membrane.

Recommended Dilutions

WB 1:1000 - 1:2000

Immunogen Information

Gene ID

8192

Swiss Prot

Q16740

Immunogen

Recombinant fusion protein containing a sequence corresponding to amino acids 1-277 of human CLPP (NP_006003.1).

Synonyms

DFNB81; PRLTS3; PP

Contact

 | 400-999-6126

 | cn.market@abclonal.com.cn

 | www.abclonal.com.cn

Product Information

Source

Rabbit

Isotype

IgG

Purification

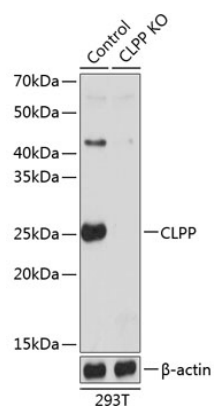
Affinity purification

Storage

Store at -20°C. Avoid freeze / thaw cycles.

Buffer: PBS with 0.01% thimerosal, 50% glycerol, pH 7.3.

Validation Data



Western blot analysis of lysates from wild type (WT) and CLPP knockout (KO) 293T cells, using [KO Validated] CLPP Rabbit pAb (A19975) at 1:1000 dilution.

Secondary antibody: HRP Goat Anti-Rabbit IgG (H+L) (AS014) at 1:10000 dilution.

Lysates/proteins: 25 μ g per lane.

Blocking buffer: 3% nonfat dry milk in TBST.

Detection: ECL Basic Kit (RM00020).

Exposure time: 1s.