

# CDA Rabbit pAb

Catalog No.: A2006

## Basic Information

### Observed MW

16kDa

### Calculated MW

16kDa

### Category

Primary antibody

### Applications

ELISA, WB, IF/ICC

### Cross-Reactivity

Human, Mouse, Rat

## Background

This gene encodes an enzyme involved in pyrimidine salvaging. The encoded protein forms a homotetramer that catalyzes the irreversible hydrolytic deamination of cytidine and deoxycytidine to uridine and deoxyuridine, respectively. It is one of several deaminases responsible for maintaining the cellular pyrimidine pool. Mutations in this gene are associated with decreased sensitivity to the cytosine nucleoside analogue cytosine arabinoside used in the treatment of certain childhood leukemias.

## Recommended Dilutions

WB 1:100 - 1:500

IF/ICC 1:50 - 1:200

## Immunogen Information

### Gene ID

978

### Swiss Prot

P32320

### Immunogen

Recombinant fusion protein containing a sequence corresponding to amino acids 1-146 of human CDA (NP\_001776.1).

### Synonyms

CDD; CDA

## Contact

☎ | 400-999-6126

✉ | [cn.market@abclonal.com.cn](mailto:cn.market@abclonal.com.cn)

🌐 | [www.abclonal.com.cn](http://www.abclonal.com.cn)

## Product Information

### Source

Rabbit

### Isotype

IgG

### Purification

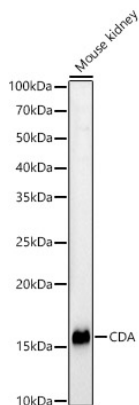
Affinity purification

### Storage

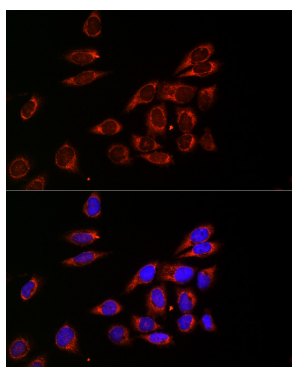
Store at -20°C. Avoid freeze / thaw cycles.

Buffer: PBS with 0.02% sodium azide, 50% glycerol, pH 7.3.

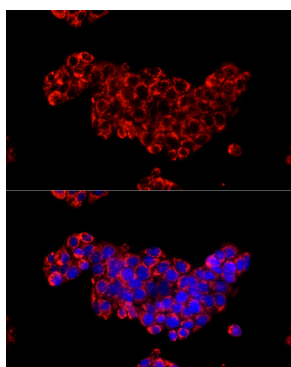
## Validation Data



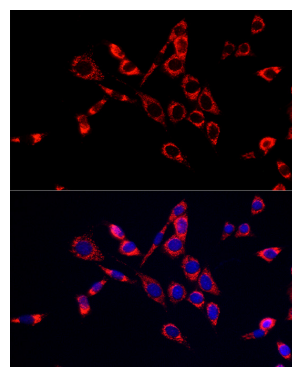
Western blot analysis of Mouse kidney, using CDA antibody (A2006) at 1:400 dilution.  
Secondary antibody: HRP Goat Anti-Rabbit IgG (H+L) (AS014) at 1:10000 dilution.  
Lysates/proteins: 25µg per lane.  
Blocking buffer: 3% nonfat dry milk in TBST.  
Detection: ECL Basic Kit (RM00020).  
Exposure time: 180s.



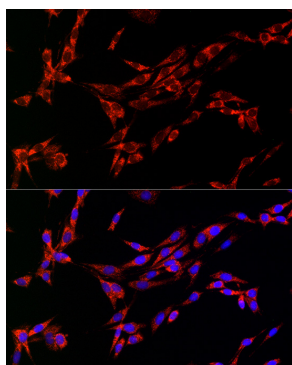
Immunofluorescence analysis of HeLa cells using CDA Rabbit pAb (A2006) at dilution of 1:20 (40x lens). Blue: DAPI for nuclear staining.



Immunofluorescence analysis of HepG2 cells using CDA Rabbit pAb (A2006) at dilution of 1:20 (40x lens). Blue: DAPI for nuclear staining.



Immunofluorescence analysis of NIH/3T3 cells using CDA Rabbit pAb (A2006) at dilution of 1:20 (40x lens). Blue: DAPI for nuclear staining.



Immunofluorescence analysis of PC-12 cells using CDA Rabbit pAb (A2006) at dilution of 1:20 (40x lens). Blue: DAPI for nuclear staining.