

SARS-CoV-2 Spike RBD Rabbit pAb

Catalog No.: A20135 **2 Publications**

Basic Information

Observed MW

30kDa

Calculated MW

141kDa

Category

Primary antibody

Applications

WB,IF/ICC,IP,(ELISA)

Cross-Reactivity

SARS-CoV-2

Background

Severe acute respiratory syndrome coronavirus 2 (SARS-CoV-2) is an enveloped, positive-sense, single-stranded RNA virus that causes coronavirus disease 2019 (COVID-19). Virus particles include the RNA genetic material and structural proteins needed for invasion of host cells. Once inside the cell the infecting RNA is used to encode structural proteins that make up virus particles, nonstructural proteins that direct virus assembly, transcription, replication and host control and accessory proteins whose function has not been determined.~ The structural proteins of SARS-CoV-2 include the envelope protein (E), spike or surface glycoprotein (S), membrane protein (M) and the nucleocapsid protein (N). The spike glycoprotein is found on the outside of the virus particle and gives coronavirus viruses their crown-like appearance. This glycoprotein mediates attachment of the virus particle and entry into the host cell. S protein is an important target for vaccine development, antibody therapies and diagnostic antigen-based tests.

Recommended Dilutions

WB 1:500 - 1:2000

IF/ICC 1:50 - 1:200

IP 0.5µg-4µg antibody for
200µg-400µg extracts of
whole cells

ELISA 1:50000-1:200000

Immunogen Information

Gene ID

43740568

Swiss Prot

P0DTC2

Immunogen

Recombinant fusion protein containing a sequence corresponding to amino acids 332-550 of coronavirus Spike RBD (YP_009724390.1).

Synonyms

spike glycoprotein; SARS-CoV-2 Spike RBD

Contact

 | 400-999-6126

 | cn.market@abclonal.com.cn

 | www.abclonal.com.cn

Product Information

Source

Rabbit

Isotype

IgG

Purification

Affinity purification

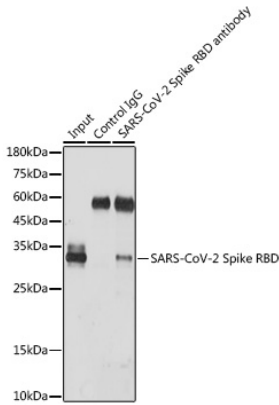
Storage

Store at -20°C. Avoid freeze / thaw cycles.

Buffer: PBS with 0.01% thimerosal,50% glycerol,pH7.3.

Validation Data

Immunoprecipitation analysis of 300 µg extracts of 293T cells using 3 µg SARS-CoV-2 Spike RBD antibody (A20135). Western blot was performed from the immunoprecipitate using SARS-CoV-2 Spike RBD antibody (A20135) at a dilution of 1:3000.



Western blot analysis of extracts of normal 293T cells and 293T transfected with Spike RBD Protein, using SARS-CoV-2 Spike RBD Rabbit pAb (A20135) at 1:1000 dilution.

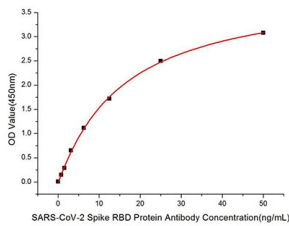
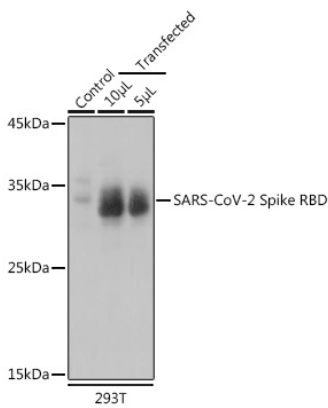
Secondary antibody: HRP-conjugated Goat anti-Rabbit IgG (H+L) (AS014) at 1:10000 dilution.

Lysates/proteins: 25µg per lane.

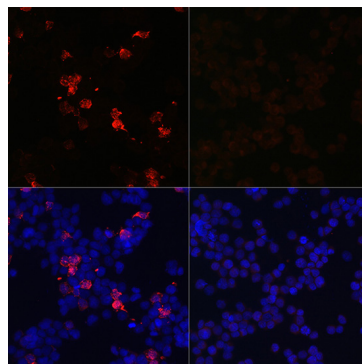
Blocking buffer: 3% nonfat dry milk in TBST.

Detection: ECL Basic Kit (RM00020).

Exposure time: 5s.



Immobilized Recombinant SARS-COV-2 Spike RBD Protein (RP01278LQ) at 1µg/mL (100µL/well) can bind SARS-CoV-2 Spike RBD Rabbit pAb (A20135) with a linear range of 0.78-50ng/mL.



Immunofluorescence analysis of 293T-RBD and 293T cells using SARS-CoV-2 Spike RBD Rabbit pAb (A20135) at dilution of 1:100 (40x lens). Secondary antibody: Cy3-conjugated Goat anti-Rabbit IgG (H+L) (AS007) at 1:500 dilution. Blue: DAPI for nuclear staining.