

SARS-CoV-2 Spike S2 ECD Rabbit pAb

Catalog No.: A20138

Basic Information

Observed MW

75kDa

Calculated MW

141kDa

Category

Primary antibody

Applications

ELISA,DB,WB,IF/ICC,IP

Cross-Reactivity

Human,SARS-CoV-2

Background

Severe acute respiratory syndrome coronavirus 2 (SARS-CoV-2) is an enveloped, positive-sense, single-stranded RNA virus that causes coronavirus disease 2019 (COVID-19). Virus particles include the RNA genetic material and structural proteins needed for invasion of host cells. Once inside the cell the infecting RNA is used to encode structural proteins that make up virus particles, nonstructural proteins that direct virus assembly, transcription, replication and host control and accessory proteins whose function has not been determined.~ The structural proteins of SARS-CoV-2 include the envelope protein (E), spike or surface glycoprotein (S), membrane protein (M) and the nucleocapsid protein (N). The spike glycoprotein is found on the outside of the virus particle and gives coronavirus viruses their crown-like appearance. This glycoprotein mediates attachment of the virus particle and entry into the host cell. S protein is an important target for vaccine development, antibody therapies and diagnostic antigen-based tests.

Recommended Dilutions

DB 1:500 - 1:2000**WB** 1:2000 - 1:6000**IF/ICC** 1:50 - 1:200**IP** 0.5µg-4µg antibody for
200µg-400µg extracts of
whole cells

Immunogen Information

Gene ID

43740568

Swiss Prot

P0DTC2

Immunogen

A synthetic peptide corresponding to a sequence within amino acids 686-1214 of coronavirus Spike S2 ECD (YP_009724390.1).

Synonyms

spike glycoprotein; SARS-CoV-2 Spike S2 ECD

Contact

 | 400-999-6126 | cn.market@abclonal.com.cn | www.abclonal.com.cn

Product Information

Source

Rabbit

Isotype

IgG

Purification

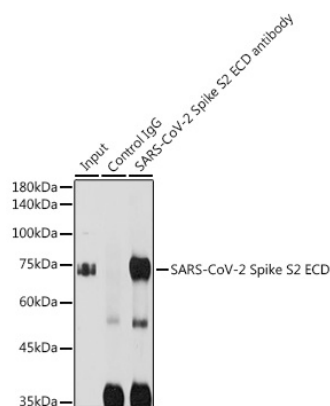
Affinity purification

Storage

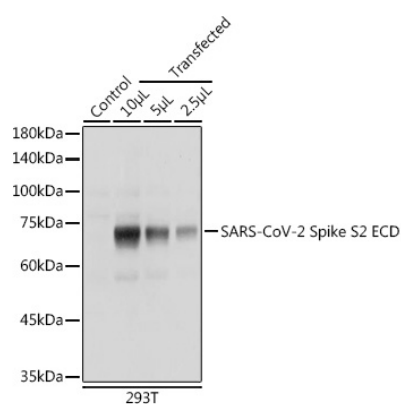
Store at -20°C. Avoid freeze / thaw cycles.

Buffer: PBS with 0.01% thimerosal, 50% glycerol, pH7.3.

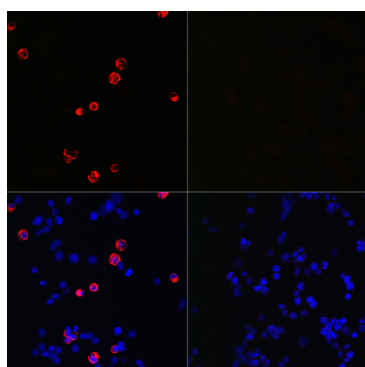
Validation Data



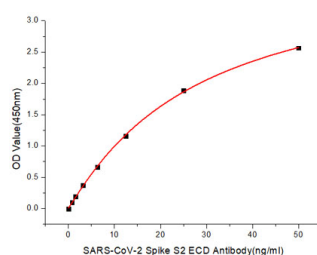
Immunoprecipitation analysis of 300 µg extracts of 293T cells using 3 µg SARS-CoV-2 Spike S2 ECD antibody (A20138). Western blot was performed from the immunoprecipitate using SARS-CoV-2 Spike S2 ECD antibody (A20138) at a dilution of 1:5000.



Western blot analysis of extracts of normal 293T cells transfected with Spike S2 ECD Protein, using SARS-CoV-2 Spike S2 ECD Rabbit pAb (A20138) at 1:5000 dilution.
Secondary antibody: HRP Goat Anti-Rabbit IgG (H+L) (AS014) at 1:10000 dilution.
Lysates/proteins: 25µg per lane.
Blocking buffer: 3% nonfat dry milk in TBST.
Detection: ECL Enhanced Kit (RM00021).
Exposure time: 1s.



Immunofluorescence analysis of 293T cells transfected with SARS-CoV-2 Spike S2 ECD fusion protein (top left) and untreated 293T cells (top right) use SARS-CoV-2 Spike S2 ECD Rabbit pAb (A20138) at dilution of 1:100 (40x lens). Secondary antibody: Cy3 Goat Anti-Rabbit IgG (H+L) (AS007) at 1:500 dilution. Blue: DAPI for nuclear staining.



Immobilized Recombinant SARS-COV2 S-ECD-PFS Protein(RP01283LQ) at 1µg/mL (100µL/well) can bind SARS-CoV-2 Spike S2 ECD Rabbit pAb (A20138) with a linear range of 3.12-50ng/mL.