

SARS-CoV-2 N Protein Mouse mAb

Catalog No.: A20142 **5 Publications**

Basic Information

Observed MW

50kDa

Calculated MW

46kDa

Category

Primary antibody

Applications

WB,IF/ICC,(ELISA)

Cross-Reactivity

SARS-CoV-2

CloneNo number

AMC0368

Background

Packages the positive strand viral genome RNA into a helical ribonucleocapsid (RNP) and plays a fundamental role during virion assembly through its interactions with the viral genome and membrane protein M. Plays an important role in enhancing the efficiency of subgenomic viral RNA transcription as well as viral replication. May modulate transforming growth factor-beta signaling by binding host SMAD3.

Recommended Dilutions

WB	1:500 - 1:1000
IF/ICC	1:50 - 1:200
ELISA	1:30000 - 1:120000

Immunogen Information

Gene ID

43740575

Swiss Prot

P59595

Immunogen

Recombinant fusion protein containing a sequence corresponding to amino acids 1-420 of coronavirus Nucleoprotein (PODTC9).

Synonyms

Nucleoprotein; NP; SARS-CoV-2 N Protein

Contact

☎ | 400-999-6126

✉ | cn.market@abclonal.com.cn

🌐 | www.abclonal.com.cn

Product Information

Source

Mouse

Isotype

IgG1,kappa

Purification

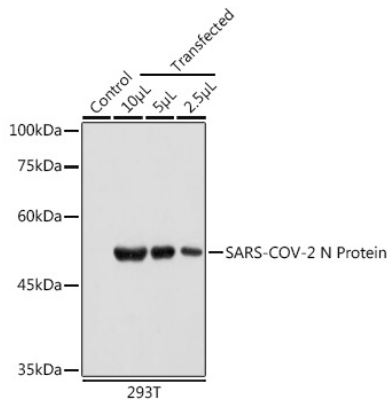
Affinity purification

Storage

Store at -20°C. Avoid freeze / thaw cycles.

Buffer: PBS with 0.01% thimerosal,50% glycerol,pH7.3.

Validation Data



Western blot analysis of extracts of normal 293T cells and 293T cells transfected with N Protein, using SARS-CoV-2 N Protein Mouse mAb (A20142) at 1:1000 dilution.

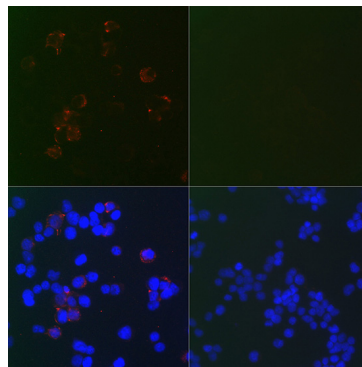
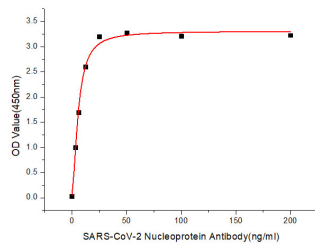
Secondary antibody: HRP-conjugated Goat anti-Mouse IgG (H+L) (AS003) at 1:10000 dilution.

Lysates/proteins: 25µg per lane.

Blocking buffer: 3% nonfat dry milk in TBST.

Detection: ECL Basic Kit (RM00020).

Exposure time: 5s.



Immobilized Recombinant 2019-nCoV Nucleocapsid Protein (RP01264LQ) at 1µg/mL (100µL/well) can bind SARS-CoV-2 Nucleoprotein Rabbit mAb (A20142) with a linear range of 3.12-200ng/mL.

Immunofluorescence analysis of 293T-N and 293T cells using SARS-CoV-2 N Protein Mouse mAb (A20142) at dilution of 1:100 (40x lens). Blue: DAPI for nuclear staining.