

# MBD6 Rabbit pAb

Catalog No.: A20148

## Basic Information

### Observed MW

101kDa

### Calculated MW

101kDa

### Category

Primary antibody

### Applications

ELISA, WB

### Cross-Reactivity

Human, Mouse, Rat

## Background

Enables chromatin binding activity. Located in chromocenter; fibrillar center; and nucleoplasm. Implicated in autism spectrum disorder.

## Recommended Dilutions

WB 1:500 - 1:1000

## Immunogen Information

### Gene ID

114785

### Swiss Prot

Q96DN6

### Immunogen

Recombinant fusion protein containing a sequence corresponding to amino acids 880-980 of human MBD6 (NP\_443129.3).

### Synonyms

## Contact

 | 400-999-6126

 | [cn.market@abclonal.com.cn](mailto:cn.market@abclonal.com.cn)

 | [www.abclonal.com.cn](http://www.abclonal.com.cn)

## Product Information

### Source

Rabbit

### Isotype

IgG

### Purification

Affinity purification

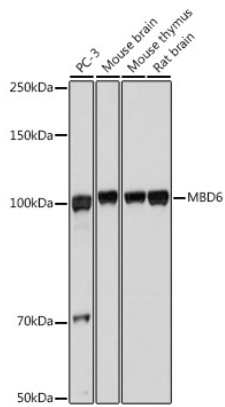
### Storage

Store at -20°C. Avoid freeze / thaw cycles.

Buffer: PBS with 0.01% thimerosal, 50% glycerol, pH7.3.

## Validation Data

---



Western blot analysis of various lysates using MBD6 Rabbit pAb (A20148) at 1:1000 dilution.  
Secondary antibody: HRP Goat Anti-Rabbit IgG (H+L) (AS014) at 1:10000 dilution.  
Lysates/proteins: 25µg per lane.  
Blocking buffer: 3% nonfat dry milk in TBST.  
Detection: ECL Basic Kit (RM00020).  
Exposure time: 10s.