

SETD1B Rabbit pAb

Catalog No.: A20155

Basic Information

Observed MW

250kDa

Calculated MW

213kDa

Category

Primary antibody

Applications

ELISA, WB

Cross-Reactivity

Human, Mouse, Rat

Background

SET1B is a component of a histone methyltransferase complex that produces trimethylated histone H3 at Lys4 (Lee et al., 2007 [PubMed 17355966]).

Recommended Dilutions

WB 1:100 - 1:500

Immunogen Information

Gene ID

23067

Swiss Prot

Q9UPS6

Immunogen

Recombinant fusion protein containing a sequence corresponding to amino acids 1673-1770 of human SETD1B (NP_001340274.1).

Synonyms

KMT2G; Set1B; IDDSELD; SETD1B

Contact

☎ | 400-999-6126

✉ | cn.market@abclonal.com.cn

🌐 | www.abclonal.com.cn

Product Information

Source

Rabbit

Isotype

IgG

Purification

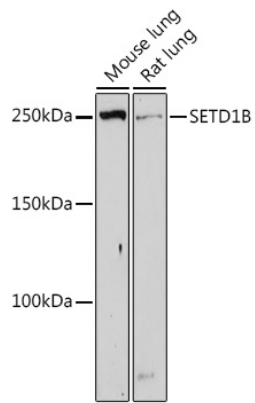
Affinity purification

Storage

Store at -20°C. Avoid freeze / thaw cycles.

Buffer: PBS with 0.05% proclin300, 50% glycerol, pH7.3.

Validation Data



Western blot analysis of various lysates using SETD1B Rabbit pAb (A20155) at 1:500 dilution.
Secondary antibody: HRP Goat Anti-Rabbit IgG (H+L) (AS014) at 1:10000 dilution.
Lysates/proteins: 25µg per lane.
Blocking buffer: 3% nonfat dry milk in TBST.
Detection: ECL Enhanced Kit (RM00021).
Exposure time: 180s.