

TMEM106B Rabbit pAb

Catalog No.: A20165 **1 Publications**

Basic Information

Observed MW

70kDa

Calculated MW

31kDa

Category

Primary antibody

Applications

ELISA, WB

Cross-Reactivity

Human, Mouse, Rat

Background

Enables ATPase binding activity. Involved in dendrite morphogenesis and lysosome localization. Located in endosome and lysosomal membrane. Implicated in hypomyelinating leukodystrophy.

Recommended Dilutions

WB 1:500 - 1:1000

Immunogen Information

Gene ID

54664

Swiss Prot

Q9NUM4

Immunogen

Recombinant fusion protein containing a sequence corresponding to amino acids 148-274 of human TMEM106B (NP_060844.2).

Synonyms

HLD16; TMEM106B

Contact

 | 400-999-6126

 | cn.market@abclonal.com.cn

 | www.abclonal.com.cn

Product Information

Source

Rabbit

Isotype

IgG

Purification

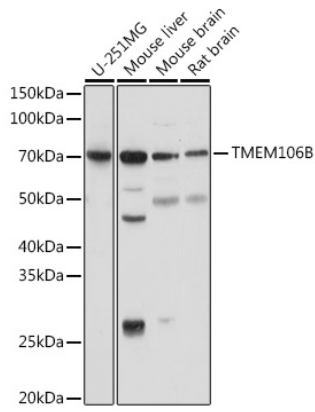
Affinity purification

Storage

Store at -20°C. Avoid freeze / thaw cycles.

Buffer: PBS with 0.01% thimerosal, 50% glycerol, pH7.3.

Validation Data



Western blot analysis of various lysates using TMEM106B Rabbit pAb (A20165) at 1:1000 dilution.
Secondary antibody: HRP Goat Anti-Rabbit IgG (H+L) (AS014) at 1:10000 dilution.
Lysates/proteins: 25µg per lane.
Blocking buffer: 3% nonfat dry milk in TBST.
Detection: ECL Basic Kit (RM00020).
Exposure time: 5s.