

STING/TMEM173 Rabbit pAb

Catalog No.: A20175 **5 Publications**

Basic Information

Observed MW

33kDa/35kDa

Calculated MW

43kDa

Category

Primary antibody

Applications

ELISA, WB, IHC-P

Cross-Reactivity

Human, Mouse, Rat

Background

Enables 2',3'-cyclic GMP-AMP binding activity; cyclic-di-GMP binding activity; and ubiquitin protein ligase binding activity. Involved in several processes, including defense response to other organism; macroautophagy; and positive regulation of interferon-beta production. Acts upstream of or within cellular response to interferon-beta; positive regulation of transcription by RNA polymerase II; and regulation of inflammatory response. Located in several cellular components, including autophagosome; perinuclear region of cytoplasm; and peroxisome. Is expressed in ductus deferens; epididymis; ileum; and prostate gland. Human ortholog(s) of this gene implicated in STING-associated vasculopathy with onset in infancy. Orthologous to human STING1 (stimulator of interferon response cGAMP interactor 1).

Recommended Dilutions

WB	1:500 - 1:1000
IHC-P	1:50 - 1:200

Immunogen Information

Gene ID

72512

Swiss Prot

Q3TBT3

Immunogen

A synthetic peptide corresponding to a sequence within amino acids 280-371 of mouse STING. (NP_938023.1).

Synonyms

ERIS; MPYS; Mita; STING; Tmem173; STING-beta; 2610307O08Rik

Contact

☎ | 400-999-6126

✉ | cn.market@abclonal.com.cn

🌐 | www.abclonal.com.cn

Product Information

Source

Rabbit

Isotype

IgG

Purification

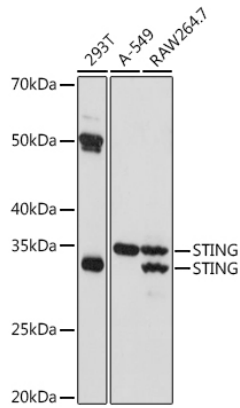
Affinity purification

Storage

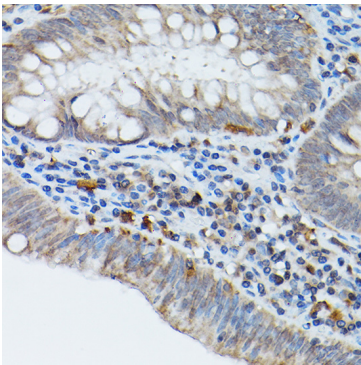
Store at -20°C. Avoid freeze / thaw cycles.

Buffer: PBS with 0.01% thimerosal, 50% glycerol, pH7.3.

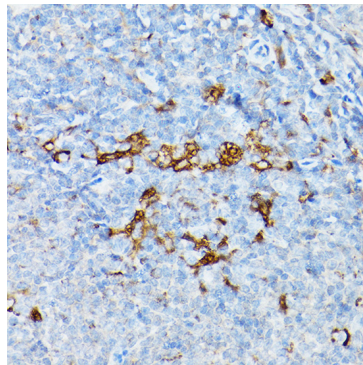
Validation Data



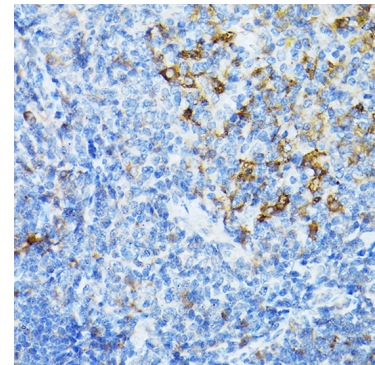
Western blot analysis of various lysates using STING Rabbit pAb (A20175) at 1:1000 dilution. Secondary antibody: HRP-conjugated Goat anti-Rabbit IgG (H+L) (AS014) at 1:10000 dilution. Lysates/proteins: 25µg per lane. Blocking buffer: 3% nonfat dry milk in TBST. Detection: ECL Basic Kit (RM00020). Exposure time: 5s.



Immunohistochemistry analysis of paraffin-embedded Human colon carcinoma using STING Rabbit pAb (A20175) at dilution of 1:20 (40x lens). High pressure antigen retrieval performed with 0.01M Citrate Bufferr (pH 6.0) prior to IHC staining.



Immunohistochemistry analysis of paraffin-embedded Rat spleen using STING Rabbit pAb (A20175) at dilution of 1:20 (40x lens). High pressure antigen retrieval performed with 0.01M Citrate Bufferr (pH 6.0) prior to IHC staining.



Immunohistochemistry analysis of paraffin-embedded Mouse spleen using STING Rabbit pAb (A20175) at dilution of 1:20 (40x lens). High pressure antigen retrieval performed with 0.01M Citrate Bufferr (pH 6.0) prior to IHC staining.