

Stella Rabbit pAb

Catalog No.: A20176

Basic Information

Observed MW

17kDa

Calculated MW

18kDa

Category

Primary antibody

Applications

WB, ELISA

Cross-Reactivity

Mouse, Rat

Background

Enables methylated histone binding activity. Involved in negative regulation of DNA demethylation; protection of DNA demethylation of female pronucleus; and regulation of genetic imprinting. Acts upstream of or within embryonic cleavage. Located in cytoplasm; female pronucleus; and male pronucleus. Is expressed in several structures, including central nervous system; early conceptus; gonad; hindgut diverticulum; and primordial germ cell. Orthologous to human DPPA3 (developmental pluripotency associated 3).

Recommended Dilutions

WB 1:500 - 1:1000

ELISA Recommended starting concentration is 1 µg/mL. Please optimize the concentration based on your specific assay requirements.

Immunogen Information

Gene ID

73708

Swiss Prot

Q8QZY3

Immunogen

Recombinant protein (or fragment). This information is considered to be commercially sensitive.

Synonyms

PCG7; PGC7; Stella; 2410075G02Rik

Contact

☎ | 400-999-6126

✉ | cn.market@abclonal.com.cn

🌐 | www.abclonal.com.cn

Product Information

Source

Rabbit

Isotype

IgG

Purification

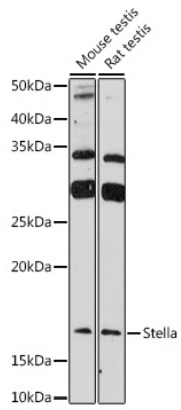
Affinity purification

Storage

Store at -20°C. Avoid freeze / thaw cycles.

Buffer: PBS with 0.01% thimerosal, 50% glycerol, pH7.3.

Validation Data



Western blot analysis of various lysates using Stella Rabbit pAb (A20176) at 1:1000 dilution.
Secondary antibody: HRP-conjugated Goat anti-Rabbit IgG (H+L) (AS014) at 1:10000 dilution.
Lysates/proteins: 25µg per lane.
Blocking buffer: 3% nonfat dry milk in TBST.
Detection: ECL Enhanced Kit (RM00021).
Exposure time: 180s.