

MT2A Rabbit pAb

Catalog No.: A2018

7 Publications

Basic Information

Observed MW

15kDa

Calculated MW

6kDa

Category

Primary antibody

Applications

WB,IHC-P,ELISA

Cross-Reactivity

Human, Mouse, Rat

Background

This gene is a member of the metallothionein family of genes. Proteins encoded by this gene family are low in molecular weight, are cysteine-rich, lack aromatic residues, and bind divalent heavy metal ions, altering the intracellular concentration of heavy metals in the cell. These proteins act as anti-oxidants, protect against hydroxyl free radicals, are important in homeostatic control of metal in the cell, and play a role in detoxification of heavy metals. The encoded protein interacts with the protein encoded by the homeobox containing 1 gene in some cell types, controlling intracellular zinc levels, affecting apoptotic and autophagy pathways. Some polymorphisms in this gene are associated with an increased risk of cancer.

Recommended Dilutions

WB 1:500 - 1:2000**IHC-P** 1:50 - 1:200

ELISA Recommended starting concentration is 1 µg/mL. Please optimize the concentration based on your specific assay requirements.

Immunogen Information

Gene ID

4502

Swiss Prot

P02795

Immunogen

Recombinant protein (or fragment). This information is considered to be commercially sensitive.

Synonyms

MT2; MT-2; MT-II; MT2A

Contact

 | 400-999-6126 | cn.market@abclonal.com.cn | www.abclonal.com.cn

Product Information

Source

Rabbit

Isotype

IgG

Purification

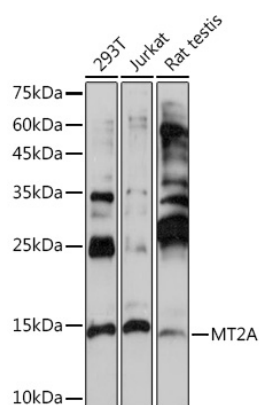
Affinity purification

Storage

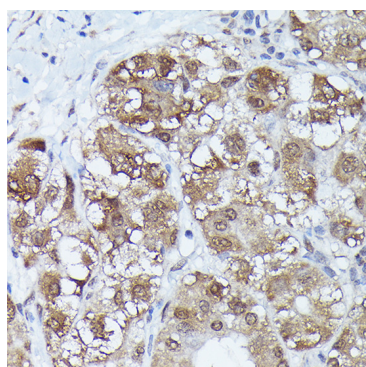
Store at -20°C. Avoid freeze / thaw cycles.

Buffer: PBS with 0.09% Sodium azide, 50% glycerol, pH7.3.

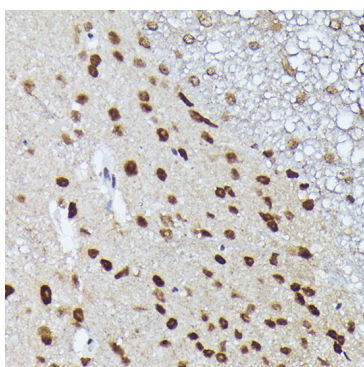
Validation Data



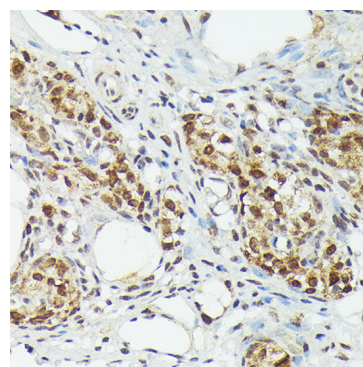
Western blot analysis of various lysates using MT2A Rabbit pAb (A2018) at 1:1000 dilution. Secondary antibody: HRP-conjugated Goat anti-Rabbit IgG (H+L) (AS014) at 1:10000 dilution. Lysates/proteins: 25µg per lane. Blocking buffer: 3% nonfat dry milk in TBST. Detection: ECL Basic Kit (RM00020). Exposure time: 30s.



Immunohistochemistry analysis of paraffin-embedded Human liver cancer using MT2A Rabbit pAb (A2018) at dilution of 1:100 (40x lens). High pressure antigen retrieval performed with 0.01M Citrate buffer (pH 6.0) prior to IHC staining.



Immunohistochemistry analysis of paraffin-embedded Mouse spinal cord using MT2A Rabbit pAb (A2018) at dilution of 1:100 (40x lens). High pressure antigen retrieval performed with 0.01M Citrate buffer (pH 6.0) prior to IHC staining.



Immunohistochemistry analysis of paraffin-embedded Rat ovary using MT2A Rabbit pAb (A2018) at dilution of 1:100 (40x lens). High pressure antigen retrieval performed with 0.01M Citrate buffer (pH 6.0) prior to IHC staining.