

HASPIN Rabbit pAb

Catalog No.: A20180

Basic Information

Observed MW

100kDa

Calculated MW

88kDa

Category

Primary antibody

Applications

WB,ELISA

Cross-Reactivity

Human, Mouse

Background

Enables ATP binding activity and histone kinase activity (H3-T3 specific). Involved in histone H3-T3 phosphorylation involved in chromosome passenger complex localization to kinetochore; intracellular signal transduction; and mitotic sister chromatid cohesion. Located in centrosome; nucleoplasm; and spindle.

Recommended Dilutions

WB 1:500 - 1:1000

ELISA Recommended starting concentration is 1 µg/mL. Please optimize the concentration based on your specific assay requirements.

Immunogen Information

Gene ID

83903

Swiss Prot

Q8TF76

Immunogen

Recombinant protein (or fragment). This information is considered to be commercially sensitive.

Synonyms

GSG2; HASPIN

Contact

☎ | 400-999-6126

✉ | cn.market@abclonal.com.cn

🌐 | www.abclonal.com.cn

Product Information

Source

Rabbit

Isotype

IgG

Purification

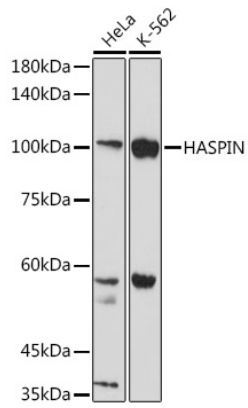
Affinity purification

Storage

Store at -20°C. Avoid freeze / thaw cycles.

Buffer: PBS with 0.01% thimerosal, 50% glycerol, pH7.3.

Validation Data



Western blot analysis of various lysates using HASPIN Rabbit pAb (A20180) at 1:1000 dilution.
Secondary antibody: HRP-conjugated Goat anti-Rabbit IgG (H+L) (AS014) at 1:10000 dilution.
Lysates/proteins: 25µg per lane.
Blocking buffer: 3% nonfat dry milk in TBST.
Detection: ECL Basic Kit (RM00020).
Exposure time: 30s.