

# Btbd11 Rabbit pAb

Catalog No.: A20192 **1 Publications**

## Basic Information

### Observed MW

121kDa

### Calculated MW

122kDa

### Category

Primary antibody

### Applications

ELISA, WB

### Cross-Reactivity

Human, Mouse, Rat

## Background

Predicted to enable protein heterodimerization activity. Acts upstream of or within SMAD protein signal transduction. Predicted to be located in membrane. Predicted to be integral component of membrane. Is expressed in central nervous system; dorsal root ganglion; genitourinary system; and thymus primordium. Orthologous to human BTBD11 (BTB domain containing 11).

## Recommended Dilutions

WB 1:500 - 1:1000

## Immunogen Information

### Gene ID

74007

### Swiss Prot

Q6GQW0

### Immunogen

Recombinant fusion protein containing a sequence corresponding to amino acids 1-120 of mouse Btbd11 (NP\_082985.2).

### Synonyms

Btbd11; 6330404E16Rik

## Contact

☎ | 400-999-6126

✉ | [cn.market@abclonal.com.cn](mailto:cn.market@abclonal.com.cn)

🌐 | [www.abclonal.com.cn](http://www.abclonal.com.cn)

## Product Information

### Source

Rabbit

### Isotype

IgG

### Purification

Affinity purification

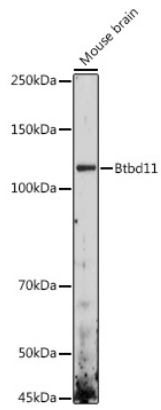
### Storage

Store at -20°C. Avoid freeze / thaw cycles.

Buffer: PBS with 0.01% thimerosal, 50% glycerol, pH7.3.

## Validation Data

---



Western blot analysis of lysates from Mouse brain, using Btrbd11 Rabbit pAb (A20192) at 1:1000 dilution.  
Secondary antibody: HRP Goat Anti-Rabbit IgG (H+L) (AS014) at 1:10000 dilution.  
Lysates/proteins: 25µg per lane.  
Blocking buffer: 3% nonfat dry milk in TBST.  
Detection: ECL Enhanced Kit (RM00021).  
Exposure time: 180s.