

G6PC Rabbit pAb

Catalog No.: A20193 **2 Publications**

Basic Information

Observed MW

40kDa

Calculated MW

40kDa

Category

Primary antibody

Applications

ELISA,WB,IF/ICC

Cross-Reactivity

Human, Mouse, Rat

Background

The enzyme encoded by this gene is a multisubunit integral membrane protein of the endoplasmic reticulum that is composed of a catalytic subunit and transporters for glucose-6-phosphate, inorganic phosphate, and glucose. This gene is one of three glucose-6-phosphatase catalytic-subunit-encoding genes in mouse. Glucose-6-phosphatase catalyzes the hydrolysis of D-glucose 6-phosphate to D-glucose and orthophosphate and is a key enzyme in glucose homeostasis, functioning in gluconeogenesis and glycogenolysis. Mutations in this gene cause glycogen storage disease type I (GSD1).

Recommended Dilutions

WB 1:500 - 1:2000

IF/ICC 1:50 - 1:200

Immunogen Information

Gene ID

14377

Swiss Prot

P35576

Immunogen

Recombinant fusion protein containing a sequence corresponding to amino acids 1-112 of mouse G6PC (NP_032087.2).

Synonyms

G6pt; G6pc1; G6Pase; Glc-6-Pase; G6PC

Contact

 | 400-999-6126 | cn.market@abclonal.com.cn | www.abclonal.com.cn

Product Information

Source

Rabbit

Isotype

IgG

Purification

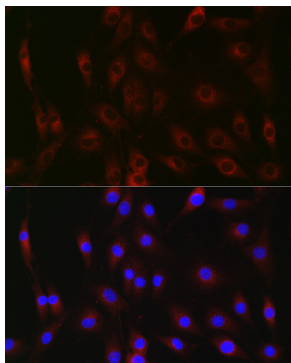
Affinity purification

Storage

Store at -20°C. Avoid freeze / thaw cycles.

Buffer: PBS with 0.01% thimerosal, 50% glycerol, pH7.3.

Validation Data



Immunofluorescence analysis of NIH/3T3 cells using G6PC Rabbit pAb (A20193) at dilution of 1:100 (40x lens). Secondary antibody: Cy3 Goat Anti-Rabbit IgG (H+L) (AS007) at 1:500 dilution. Blue: DAPI for nuclear staining.