

MPC2 Rabbit pAb

Catalog No.: A20196

Basic Information

Observed MW

14kDa

Calculated MW

14kDa

Category

Primary antibody

Applications

ELISA, WB, IHC-P

Cross-Reactivity

Mouse, Rat

Background

Enables identical protein binding activity. Predicted to be involved in mitochondrial pyruvate transmembrane transport. Predicted to act upstream of or within mitochondrial acetyl-CoA biosynthetic process from pyruvate and positive regulation of insulin secretion involved in cellular response to glucose stimulus. Located in mitochondrion.

Recommended Dilutions

WB 1:500 - 1:1000

IHC-P 1:50 - 1:200

Immunogen Information

Gene ID

25874

Swiss Prot

O95563

Immunogen

A synthetic peptide corresponding to a sequence within amino acids 1-60 of human MPC2 (NP_056230.1).

Synonyms

BRP44; SLC54A2; MPC2

Contact

☎ | 400-999-6126

✉ | cn.market@abclonal.com.cn

🌐 | www.abclonal.com.cn

Product Information

Source

Rabbit

Isotype

IgG

Purification

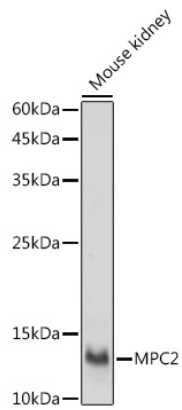
Affinity purification

Storage

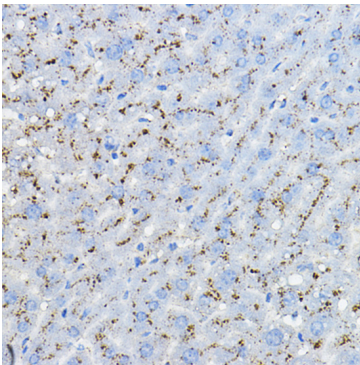
Store at -20°C. Avoid freeze / thaw cycles.

Buffer: PBS with 0.01% thimerosal, 50% glycerol, pH7.3.

Validation Data



Western blot analysis of lysates from Mouse kidney, using MPC2 Rabbit pAb (A20196) at 1:1000 dilution.
Secondary antibody: HRP Goat Anti-Rabbit IgG (H+L) (AS014) at 1:10000 dilution.
Lysates/proteins: 25µg per lane.
Blocking buffer: 3% nonfat dry milk in TBST.
Detection: ECL Basic Kit (RM00020).
Exposure time: 30s.



Immunohistochemistry analysis of paraffin-embedded mouse liver using MPC2 Rabbit pAb (A20196) at dilution of 1:100 (40x lens). Perform high pressure antigen retrieval with 10 mM citrate buffer pH 6.0 before commencing with IHC staining protocol.