

# CD38 Rabbit mAb

Catalog No.: A20215 **Recombinant** **1 Publications**

## Basic Information

### Observed MW

Refer to figures

### Calculated MW

34kDa

### Category

Primary antibody

### Applications

FC,ELISA

### Cross-Reactivity

Human

### CloneNo number

ARC5131-01

## Background

The protein encoded by this gene is a non-lineage-restricted, type II transmembrane glycoprotein that synthesizes and hydrolyzes cyclic adenosine 5'-diphosphate-ribose, an intracellular calcium ion mobilizing messenger. The release of soluble protein and the ability of membrane-bound protein to become internalized indicate both extracellular and intracellular functions for the protein. This protein has an N-terminal cytoplasmic tail, a single membrane-spanning domain, and a C-terminal extracellular region with four N-glycosylation sites. Crystal structure analysis demonstrates that the functional molecule is a dimer, with the central portion containing the catalytic site. It is used as a prognostic marker for patients with chronic lymphocytic leukemia. Alternative splicing results in multiple transcript variants.

## Recommended Dilutions

**FC** 1:50 - 1:200

**ELISA** Recommended starting concentration is 1 µg/mL. Please optimize the concentration based on your specific assay requirements.

## Immunogen Information

### Gene ID

952

### Swiss Prot

P28907

### Immunogen

Recombinant fusion protein containing a sequence corresponding to amino acids 43-300 of human CD38 (P28907).

### Synonyms

ADPRC1; cADPR1; ADPRC 1; CD38

## Contact

☎ | 400-999-6126

✉ | [cn.market@abclonal.com.cn](mailto:cn.market@abclonal.com.cn)

🌐 | [www.abclonal.com.cn](http://www.abclonal.com.cn)

## Product Information

### Source

Rabbit

### Isotype

IgG

### Purification

Affinity purification

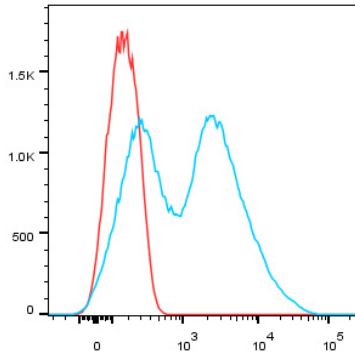
### Storage

Store at -20°C. Avoid freeze / thaw cycles.

Buffer: PBS with 0.09% Sodium azide,0.05% BSA,50% glycerol,pH7.3.

## Validation Data

---



Human peripheral blood lymphocytes stained with CD38 Rabbit mAb (10 µg/mL) plus FITC conjugated goat anti-rabbit IgG (Blue). Secondary antibody only staining (red) were used as a control.