

# CKM Rabbit pAb

Catalog No.: A2024 **2 Publications**

## Basic Information

### Observed MW

43kDa

### Calculated MW

43kDa

### Category

Primary antibody

### Applications

ELISA, WB, IF/ICC

### Cross-Reactivity

Human, Mouse, Rat

## Background

The protein encoded by this gene is a cytoplasmic enzyme involved in energy homeostasis and is an important serum marker for myocardial infarction. The encoded protein reversibly catalyzes the transfer of phosphate between ATP and various phosphogens such as creatine phosphate. It acts as a homodimer in striated muscle as well as in other tissues, and as a heterodimer with a similar brain isozyme in heart. The encoded protein is a member of the ATP:guanido phosphotransferase protein family.

## Recommended Dilutions

|               |                 |
|---------------|-----------------|
| <b>WB</b>     | 1:1000 - 1:5000 |
| <b>IF/ICC</b> | 1:20 - 1:200    |

## Immunogen Information

### Gene ID

1158

### Swiss Prot

P06732

### Immunogen

Recombinant fusion protein containing a sequence corresponding to amino acids 3-381 of human CKM (NP\_001815.2).

### Synonyms

CKMM; M-CK; CPK-M; CKM

## Contact

☎ | 400-999-6126

✉ | [cn.market@abclonal.com.cn](mailto:cn.market@abclonal.com.cn)

🌐 | [www.abclonal.com.cn](http://www.abclonal.com.cn)

## Product Information

### Source

Rabbit

### Isotype

IgG

### Purification

Affinity purification

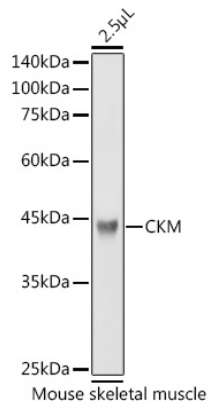
### Storage

Store at -20°C. Avoid freeze / thaw cycles.

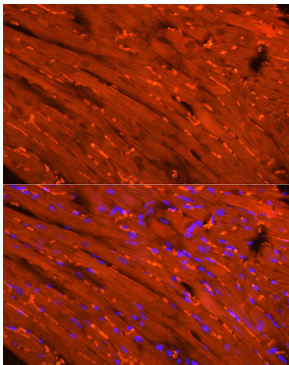
Buffer: PBS with 0.02% sodium azide, 50% glycerol, pH7.3.

## Validation Data

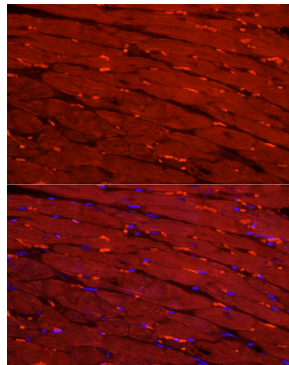
---



Western blot analysis of extracts of Mouse skeletal muscle, using CKM antibody (A2024) at 1:3000 dilution.  
Secondary antibody: HRP Goat Anti-Rabbit IgG (H+L) (AS014) at 1:10000 dilution.  
Lysates/proteins: 25µg per lane.  
Blocking buffer: 3% nonfat dry milk in TBST.  
Detection: ECL Basic Kit (RM00020).  
Exposure time: 1s.



Perform high pressure antigen retrieval with 10 mM citrate buffer pH 6.0 before commencing with IF staining protocol. Immunofluorescence analysis of mouse heart cells using CKM Rabbit pAb (A2024) at dilution of 1:20 (40x lens). Blue: DAPI for nuclear staining.



Perform high pressure antigen retrieval with 10 mM citrate buffer pH 6.0 before commencing with IF staining protocol. Immunofluorescence analysis of rat heart cells using CKM Rabbit pAb (A2024) at dilution of 1:20 (40x lens). Blue: DAPI for nuclear staining.