

# Fam50b Rabbit pAb

Catalog No.: A20245

## Basic Information

### Observed MW

39kDa

### Calculated MW

40kDa

### Category

Primary antibody

### Applications

ELISA, WB, IHC-P

### Cross-Reactivity

Human, Mouse, Rat

## Background

Predicted to be involved in chromatin organization. Predicted to be located in intercellular bridge; midbody; and nucleoplasm. Predicted to be active in nucleus. Is expressed in primary spermatocyte; seminiferous tubule; and spermatid. Orthologous to human FAM50B (family with sequence similarity 50 member B).

## Recommended Dilutions

WB 1:500 - 1:1000

IHC-P 1:50 - 1:200

## Immunogen Information

### Gene ID

108161

### Swiss Prot

Q9WTJ8

### Immunogen

Recombinant fusion protein containing a sequence corresponding to amino acids 70-150 of mouse Fam50b (NP\_620085.2).

### Synonyms

X5L; D0H6S2654E; XAP-5-like; Fam50b

## Contact

☎ | 400-999-6126

✉ | [cn.market@abclonal.com.cn](mailto:cn.market@abclonal.com.cn)

🌐 | [www.abclonal.com.cn](http://www.abclonal.com.cn)

## Product Information

### Source

Rabbit

### Isotype

IgG

### Purification

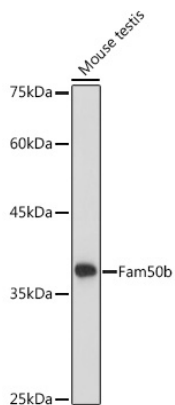
Affinity purification

### Storage

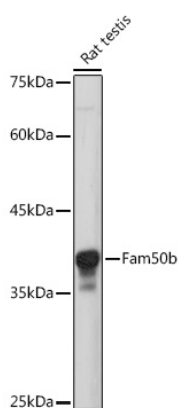
Store at -20°C. Avoid freeze / thaw cycles.

Buffer: PBS with 0.01% thimerosal, 50% glycerol, pH7.3.

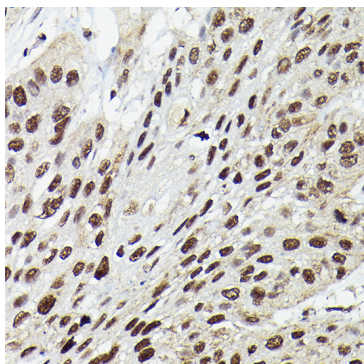
## Validation Data



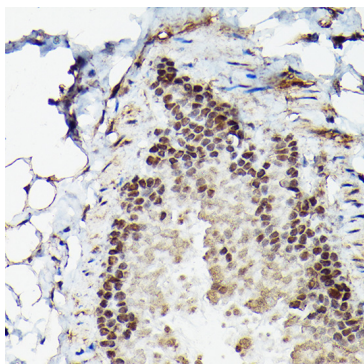
Western blot analysis of lysates from Mouse testis, using Fam50b Rabbit pAb (A20245) at 1:1000 dilution. Secondary antibody: HRP Goat Anti-Rabbit IgG (H+L) (AS014) at 1:10000 dilution. Lysates/proteins: 25µg per lane. Blocking buffer: 3% nonfat dry milk in TBST. Detection: ECL Basic Kit (RM00020). Exposure time: 30s.



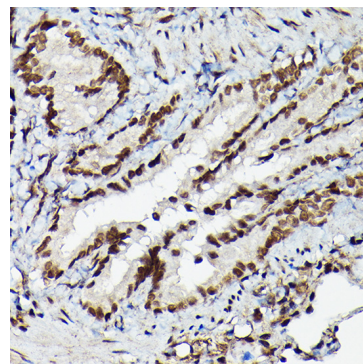
Western blot analysis of lysates from Rat testis, using Fam50b Rabbit pAb (A20245) at 1:1000 dilution. Secondary antibody: HRP Goat Anti-Rabbit IgG (H+L) (AS014) at 1:10000 dilution. Lysates/proteins: 25µg per lane. Blocking buffer: 3% nonfat dry milk in TBST. Detection: ECL Basic Kit (RM00020). Exposure time: 180s.



Immunohistochemistry analysis of paraffin-embedded human esophageal cancer using Fam50b Rabbit pAb (A20245) at dilution of 1:50 (40x lens). Perform high pressure antigen retrieval with 10 mM citrate buffer pH 6.0 before commencing with IHC staining protocol.



Immunohistochemistry analysis of paraffin-embedded mouse lung using Fam50b Rabbit pAb (A20245) at dilution of 1:50 (40x lens). Perform high pressure antigen retrieval with 10 mM citrate buffer pH 6.0 before commencing with IHC staining protocol.



Immunohistochemistry analysis of paraffin-embedded rat lung using Fam50b Rabbit pAb (A20245) at dilution of 1:50 (40x lens). Perform high pressure antigen retrieval with 10 mM citrate buffer pH 6.0 before commencing with IHC staining protocol.