

# XCR1 Rabbit pAb

Catalog No.: A20258

## Basic Information

### Observed MW

Refer to figures

### Calculated MW

39kDa

### Category

Primary antibody

### Applications

IHC-P, ELISA

### Cross-Reactivity

Rat

## Background

The protein encoded by this gene is a chemokine receptor belonging to the G protein-coupled receptor superfamily. The family members are characterized by the presence of 7 transmembrane domains. The encoded protein transduces a signal by increasing the intracellular calcium ion level. The viral macrophage inflammatory protein-II is an antagonist of this receptor and blocks signaling. Some studies have implicated a cluster of genes at 3p21.31, including this gene, as associated with COVID-19 risk. The encoded protein may also play a role in cell proliferation and migration in several types of cancer.

## Recommended Dilutions

**IHC-P** 1:50 - 1:200

**ELISA** Recommended starting concentration is 1 µg/mL. Please optimize the concentration based on your specific assay requirements.

## Immunogen Information

### Gene ID

2829

### Swiss Prot

P46094

### Immunogen

Synthetic peptide. This information is considered to be commercially sensitive.

### Synonyms

GPR5; CCXCR1; XCR1

## Contact

☎ | 400-999-6126

✉ | [cn.market@abclonal.com.cn](mailto:cn.market@abclonal.com.cn)

🌐 | [www.abclonal.com.cn](http://www.abclonal.com.cn)

## Product Information

### Source

Rabbit

### Isotype

IgG

### Purification

Affinity purification

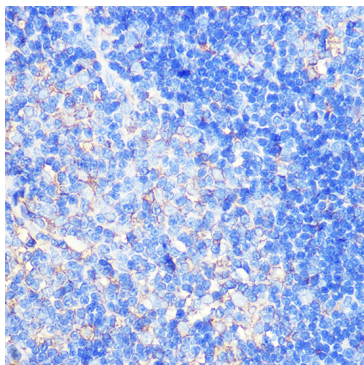
### Storage

Store at -20°C. Avoid freeze / thaw cycles.

Buffer: PBS with 0.01% thimerosal, 50% glycerol, pH7.3.

## Validation Data

---



Immunohistochemistry analysis of paraffin-embedded Rat thymus using XCR1 Rabbit pAb (A20258) at dilution of 1:100 (40x lens). Microwave antigen retrieval performed with 0.01M Tris/EDTA Buffer (pH 9.0) prior to IHC staining.