

PD-L1/CD274 Rabbit mAb

Catalog No.: A20270 Recombinant

Basic Information

Observed MW

Refer to figures

Calculated MW

33kDa

Category

Primary antibody

Applications

FC,ELISA,Inhibition

Cross-Reactivity

Human

CloneNo number

ARC5128-01

Background

This gene encodes an immune inhibitory receptor ligand that is expressed by hematopoietic and non-hematopoietic cells, such as T cells and B cells and various types of tumor cells. The encoded protein is a type I transmembrane protein that has immunoglobulin V-like and C-like domains. Interaction of this ligand with its receptor inhibits T-cell activation and cytokine production. During infection or inflammation of normal tissue, this interaction is important for preventing autoimmunity by maintaining homeostasis of the immune response. In tumor microenvironments, this interaction provides an immune escape for tumor cells through cytotoxic T-cell inactivation. Expression of this gene in tumor cells is considered to be prognostic in many types of human malignancies, including colon cancer and renal cell carcinoma. Alternative splicing results in multiple transcript variants.

Recommended Dilutions

FC	1:50 - 1:200
Elisa	1:500 - 1:2000

Immunogen Information

Gene ID

29126

Swiss Prot

Q9NZQ7

Immunogen

Recombinant fusion protein containing a sequence corresponding to amino acids 1-290 of human PD-L1/CD274 (Q9NZQ7)

Synonyms

B7-H; B7H1; PDL1; PD-L1; hPD-L1; PDCD1L1; PDCD1LG1; PD-L1/CD274

Contact

 | 400-999-6126

 | cn.market@abclonal.com.cn
 | www.abclonal.com.cn

Product Information

Source

Rabbit

Isotype

IgG

Purification

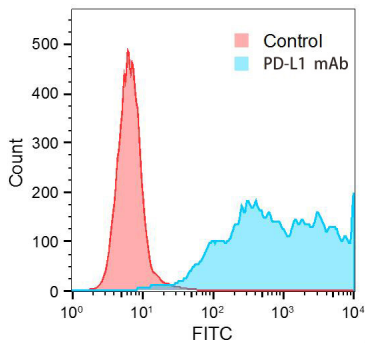
≥95% purity by SDS-PAGE

Storage

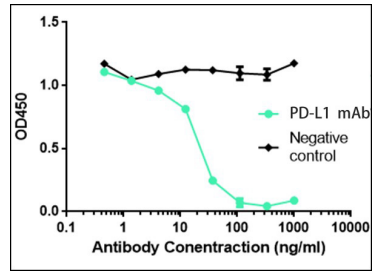
Store at -20°C. Avoid freeze / thaw cycles.

Buffer: PBS with 0.02% sodium azide,0.05% BSA,50% glycerol,pH7.3.

Validation Data



Flow cytometry: PD-L1/CD274 expressing 293F cells were stained with control IgG or PD-L1/CD274 Rabbit mAb (A20270).
Primary:PD-L1/CD274 Rabbit mAb (A20270) at 1:100 dilution
Secondary:1:1000 goat anti-rabbit IgG FITC



1 μ g/mL of biotinylated PD-L1/CD274 protein was incubated with PD-L1/CD274 Rabbit mAb (A20270) or control mAb with serial dilution for 1 hour at RT. The mixture was added to ELISA plate coated with 1 μ g/mL of recombinant expressed PD-1. HRP-Streptavidin was used for biotinylated PD-L1/CD274 detection.