

# [KO Validated] Edf1 Rabbit pAb

Catalog No.: A20274 **KO Validated**

## Basic Information

### Observed MW

17kDa

### Calculated MW

16kDa

### Category

Primary antibody

### Applications

ELISA, WB

### Cross-Reactivity

Human, Mouse

## Background

Predicted to enable TFIIID-class transcription factor complex binding activity and transcription coactivator activity. Predicted to be involved in positive regulation of DNA binding activity. Predicted to act upstream of or within cell differentiation. Predicted to be located in cytosol; nucleolus; and nucleoplasm. Predicted to be active in nucleus. Is expressed in several structures, including central nervous system; genitourinary system; heart; liver; and retina. Orthologous to human EDF1 (endothelial differentiation related factor 1).

## Recommended Dilutions

WB 1:500 - 1:1000

## Immunogen Information

### Gene ID

59022

### Swiss Prot

Q9JMG1

### Immunogen

Recombinant fusion protein containing a sequence corresponding to amino acids 1-148 of mouse Edf1 (NP\_067494.1).

### Synonyms

MBF1; 0610008L11Rik; f1

## Contact

 | 400-999-6126

 | [cn.market@abclonal.com.cn](mailto:cn.market@abclonal.com.cn)

 | [www.abclonal.com.cn](http://www.abclonal.com.cn)

## Product Information

### Source

Rabbit

### Isotype

IgG

### Purification

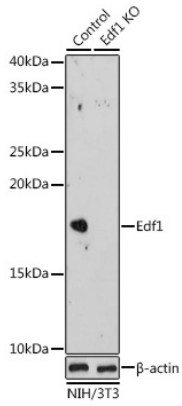
Affinity purification

### Storage

Store at -20°C. Avoid freeze / thaw cycles.

Buffer: PBS with 0.01% thimerosal, 50% glycerol, pH 7.3.

## Validation Data



Western blot analysis of lysates from wild type (WT) and Edf1 knockout (KO) NIH/3T3 cells, using [KO Validated] Edf1 Rabbit pAb (A20274) at 1:1000 dilution.

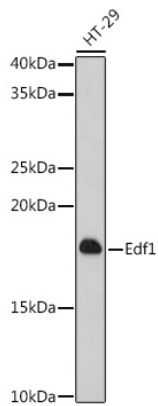
Secondary antibody: HRP Goat Anti-Rabbit IgG (H+L) (AS014) at 1:10000 dilution.

Lysates/proteins: 25µg per lane.

Blocking buffer: 3% nonfat dry milk in TBST.

Detection: ECL Enhanced Kit (RM00021).

Exposure time: 180s.



Western blot analysis of lysates from HT-29 cells, using [KO Validated] Edf1 Rabbit pAb (A20274) at 1:1000 dilution.

Secondary antibody: HRP Goat Anti-Rabbit IgG (H+L) (AS014) at 1:10000 dilution.

Lysates/proteins: 25µg per lane.

Blocking buffer: 3% nonfat dry milk in TBST.

Detection: ECL Enhanced Kit (RM00021).

Exposure time: 180s.