

# RPS6KA1/RPS6KA2/RPS6KA3 Rabbit pAb

Catalog No.: A20285

## Basic Information

### Observed MW

83kDa

### Calculated MW

### Category

Primary antibody

### Applications

ELISA, WB, IHC-P, IF/ICC

### Cross-Reactivity

Human, Mouse, Rat

## Background

This gene encodes a member of the RSK (ribosomal S6 kinase) family of serine/threonine kinases. This kinase contains 2 nonidentical kinase catalytic domains and phosphorylates various substrates, including members of the mitogen-activated kinase (MAPK) signalling pathway. The activity of this protein has been implicated in controlling cell growth and differentiation. Alternate transcriptional splice variants, encoding different isoforms, have been characterized.

## Recommended Dilutions

WB	1:500 - 1:1000
IHC-P	1:50 - 1:200
IF/ICC	1:50 - 1:200

## Immunogen Information

### Gene ID

6195/ 6196/ 6197

### Swiss Prot

Q15418/Q15349/P51812

### Immunogen

A synthetic peptide corresponding to a sequence within amino acids 600-700 of human RPS6KA1/RPS6KA2/RPS6KA3 (NP\_002944.2).

### Synonyms

## Contact

☎	400-999-6126
✉	cn.market@abclonal.com.cn
🌐	www.abclonal.com.cn

## Product Information

### Source

Rabbit

### Isotype

IgG

### Purification

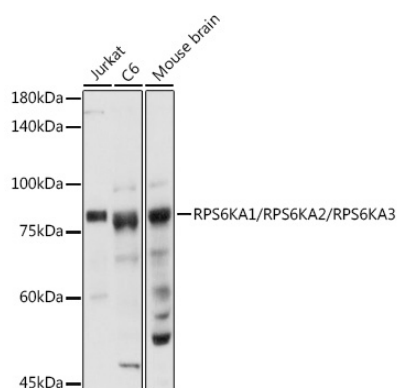
Affinity purification

### Storage

Store at -20°C. Avoid freeze / thaw cycles.

Buffer: PBS with 0.01% thimerosal, 50% glycerol, pH7.3.

## Validation Data



Western blot analysis of various lysates using RPS6KA1/RPS6KA2/RPS6KA3 Rabbit pAb (A20285) at 1:1000 dilution.

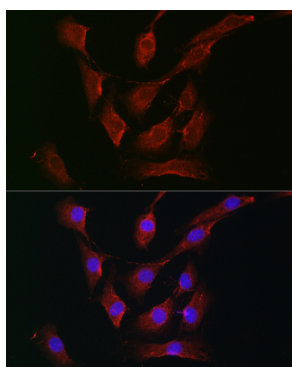
Secondary antibody: HRP Goat Anti-Rabbit IgG (H+L) (AS014) at 1:10000 dilution.

Lysates/proteins: 25µg per lane.

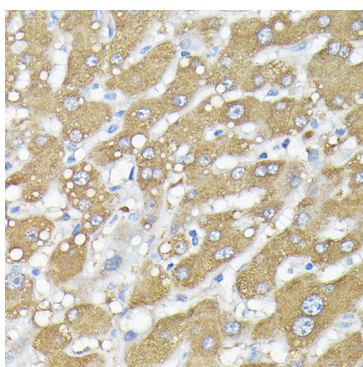
Blocking buffer: 3% nonfat dry milk in TBST.

Detection: ECL Basic Kit (RM00020).

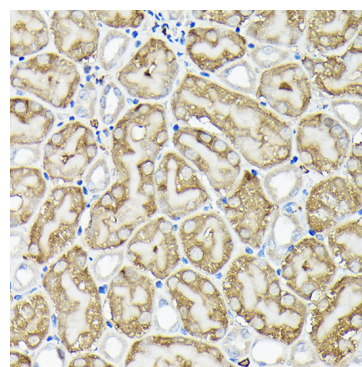
Exposure time: 10s.



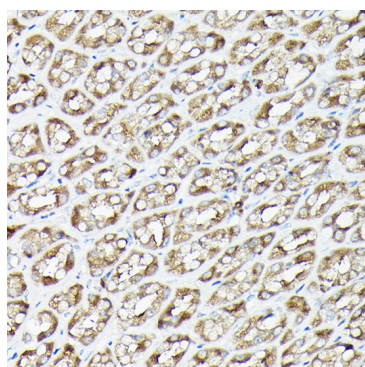
Immunofluorescence analysis of NIH-3T3 cells using RPS6KA1/RPS6KA2/RPS6KA3 Rabbit pAb (A20285) at dilution of 1:200 (40x lens). Secondary antibody: Cy3 Goat Anti-Rabbit IgG (H+L) (AS007) at 1:500 dilution. Blue: DAPI for nuclear staining.



Immunohistochemistry analysis of RPS6KA1/RPS6KA2/RPS6KA3 in paraffin-embedded human liver using RPS6KA1/RPS6KA2/RPS6KA3 Rabbit pAb (A20285) at dilution of 1:200 (40x lens). Perform high pressure antigen retrieval with 10 mM citrate buffer pH 6.0 before commencing with IHC staining protocol.



Immunohistochemistry analysis of RPS6KA1/RPS6KA2/RPS6KA3 in paraffin-embedded mouse kidney using RPS6KA1/RPS6KA2/RPS6KA3 Rabbit pAb (A20285) at dilution of 1:200 (40x lens). Perform high pressure antigen retrieval with 10 mM citrate buffer pH 6.0 before commencing with IHC staining protocol.



Immunohistochemistry analysis of RPS6KA1/RPS6KA2/RPS6KA3 in paraffin-embedded rat stomach using RPS6KA1/RPS6KA2/RPS6KA3 Rabbit pAb (A20285) at dilution of 1:200 (40x lens). Perform high pressure antigen retrieval with 10 mM citrate buffer pH 6.0 before commencing with IHC staining protocol.