

# METTL9 Rabbit pAb

Catalog No.: A20313

## Basic Information

### Observed MW

40kDa

### Calculated MW

37kDa

### Category

Primary antibody

### Applications

ELISA, WB

### Cross-Reactivity

Human, Mouse

## Background

Enables protein-L-histidine N-pros-methyltransferase activity. Predicted to be involved in methylation. Is active in endoplasmic reticulum.

## Recommended Dilutions

WB 1:500 - 1:1000

## Immunogen Information

### Gene ID

51108

### Swiss Prot

Q9H1A3

### Immunogen

Recombinant protein of human METTL9.

### Synonyms

DREV; PAP1; DREV1; CGI-81; hMETTL9; METTL9

## Contact

☎ | 400-999-6126

✉ | [cn.market@abclonal.com.cn](mailto:cn.market@abclonal.com.cn)

🌐 | [www.abclonal.com.cn](http://www.abclonal.com.cn)

## Product Information

### Source

Rabbit

### Isotype

IgG

### Purification

Affinity purification

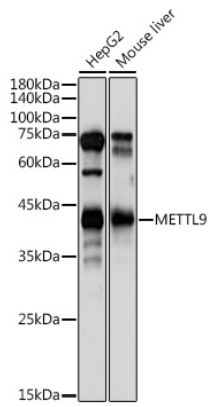
### Storage

Store at -20°C. Avoid freeze / thaw cycles.

Buffer: PBS with 0.01% thimerosal, 50% glycerol, pH7.3.

## Validation Data

---



Western blot analysis of various lysates using METTL9 Rabbit pAb (A20313) at 1:1000 dilution.  
Secondary antibody: HRP Goat Anti-Rabbit IgG (H+L) (AS014) at 1:10000 dilution.  
Lysates/proteins: 25µg per lane.  
Blocking buffer: 3% nonfat dry milk in TBST.  
Detection: ECL Basic Kit (RM00020).  
Exposure time: 30s.