

SARS-CoV-2 NSP10 Rabbit pAb

Catalog No.: A20325 **1 Publications**

Basic Information

Observed MW

20-25kDa/

Calculated MW

794kDa

Category

Primary antibody

Applications

WB,IP,ELISA

Cross-Reactivity

SARS-CoV-2

Background

Severe acute respiratory syndrome coronavirus 2 (SARS-CoV-2) is an enveloped, positive-sense, single-stranded RNA virus that causes coronavirus disease 2019 (COVID-19). Virus particles include the RNA genetic material and structural proteins needed for invasion of host cells. Once inside the cell the infecting RNA is used to encode structural proteins that make up virus particles, nonstructural proteins that direct virus assembly, transcription, replication and host control and accessory proteins whose function has not been determined.~ ORF1ab, the largest gene, contains overlapping open reading frames that encode polyproteins PP1ab and PP1a. The polyproteins are cleaved to yield 16 nonstructural proteins, NSP1-16. Production of the longer (PP1ab) or shorter protein (PP1a) depends on a -1 ribosomal frameshifting event. The proteins, based on similarity to other coronaviruses, include the papain-like proteinase protein (NSP3), 3C-like proteinase (NSP5), RNA-dependent RNA polymerase (NSP12, RdRp), helicase (NSP13, HEL), endoRNase (NSP15), 2'-O-Ribose-Methyltransferase (NSP16) and other nonstructural proteins. SARS-CoV-2 nonstructural proteins are responsible for viral transcription, replication, proteolytic processing, suppression of host immune responses and suppression of host gene expression. The RNA-dependent RNA polymerase is a target of antiviral therapies.

Recommended Dilutions

WB 1:2000 - 1:10000

IP 0.5µg-4µg antibody for
200µg-600µg extracts of
whole cells

ELISA Recommended starting
concentration is 1 µg/mL.
Please optimize the
concentration based on
your specific assay
requirements.

Contact

☎ | 400-999-6126

✉ | cn.market@abclonal.com.cn

🌐 | www.abclonal.com.cn

Immunogen Information

Gene ID

43740578

Swiss Prot

P0DTD1

Immunogen

Recombinant fusion protein containing a sequence corresponding to amino acids 1-139 of coronavirus NSP10 (YP_009725306.1).

Synonyms

Product Information

Source

Rabbit

Isotype

IgG

Purification

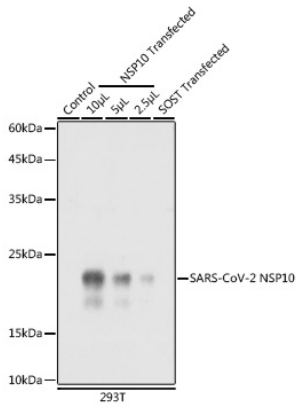
Affinity purification

Storage

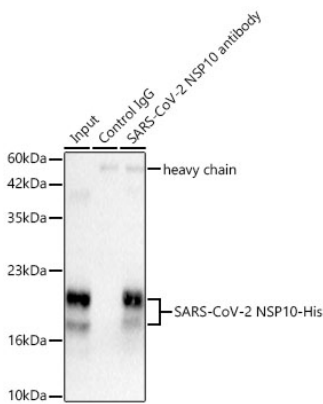
Store at -20°C. Avoid freeze / thaw cycles.

Buffer: PBS with 0.05% proclin300,50% glycerol,pH7.3.

Validation Data



Western blot analysis of extracts of normal 293T cells, 293T transfected with NSP10 Protein and 293T transfected with SOST Protein, using SARS-CoV-2 NSP10 Rabbit pAb (A20325) at 1:10000 dilution. Secondary antibody: HRP-conjugated Goat anti-Rabbit IgG (H+L) (AS014) at 1:10000 dilution. Lysates/proteins: 25µg per lane. Blocking buffer: 3% nonfat dry milk in TBST. Detection: ECL Basic Kit (RM00020). Exposure time: 1s.



Immunoprecipitation of SARS-CoV-2 NSP10 from 300 µg extracts of 293T cells transfected with SARS-CoV-2 NSP10 was performed using 2 µg of SARS-CoV-2 NSP10 Rabbit pAb (A20325). Rabbit IgG isotype control(AC042) was used to precipitate the Control IgG sample. IP samples were eluted with 1X Laemmli Buffer. The Input lane represents 10 % of the total input. Western blot analysis of immunoprecipitates was conducted using SARS-CoV-2 NSP10 Rabbit pAb (A20325) at a dilution of 1:4000.