

# GHD7 Rabbit pAb

Catalog No.: A20327

## Basic Information

### Observed MW

27kDa

### Calculated MW

27kDa

### Category

Primary antibody

### Applications

ELISA, WB

### Cross-Reactivity

Oryza sativa

## Background

Probable transcription factor involved in the regulation of flowering time under long day (LD) conditions. Plays a major role as repressor of flowering. Controls flowering time by negatively regulating the expression of EHD1 and HD3A.

## Recommended Dilutions

WB 1:500 - 1:2000

## Immunogen Information

### Gene ID

107276161

### Swiss Prot

E5RQA1

### Immunogen

Recombinant protein of Oryza sativa GHD7.

### Synonyms

Ghd7; GHD7

## Contact

☎ | 400-999-6126

✉ | [cn.market@abclonal.com.cn](mailto:cn.market@abclonal.com.cn)

🌐 | [www.abclonal.com.cn](http://www.abclonal.com.cn)

## Product Information

### Source

Rabbit

### Isotype

IgG

### Purification

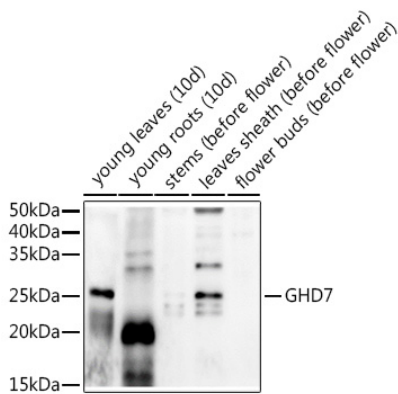
Affinity purification

### Storage

Store at -20°C. Avoid freeze / thaw cycles.

Buffer: PBS with 0.01% thimerosal, 50% glycerol, pH7.3.

Validation Data



Western blot analysis of extracts of various tissues from the japonica rice (*Oryza sativa* L.) variety Zhonghua 11, using GHD7 Rabbit pAb (A20327) at 1:1000 dilution. Secondary antibody: HRP Goat Anti-Rabbit IgG (H+L) (AS014) at 1:10000 dilution. Lysates/proteins: 25µg per lane. Blocking buffer: 3% nonfat dry milk in TBST. Detection: ECL Enhanced Kit (RM00021). Exposure time: 60s.