

MOC1 Rabbit pAb

Catalog No.: A20329

Basic Information

Observed MW

50kDa

Calculated MW

46kDa

Category

Primary antibody

Applications

ELISA, WB

Cross-Reactivity

Oryza sativa

Background

Putative transcription regulator that controls rice tillering by initiating axillary buds and promoting their outgrowth. Rice tiller is a specialized grain-bearing branch that is formed on the unelongated basal internode and grows independently of the mother stem (culm) by means of its own adventitious roots.

Recommended Dilutions

WB 1:500 - 1:2000

Immunogen Information

Gene ID

107278653

Swiss Prot

Q84MM9

Immunogen

A synthetic peptide corresponding to a sequence within amino acids 1-100 of Oryza sativa MOC1. (Q84MM9).

Synonyms

MOC1

Contact

☎ | 400-999-6126

✉ | cn.market@abclonal.com.cn

🌐 | www.abclonal.com.cn

Product Information

Source

Rabbit

Isotype

IgG

Purification

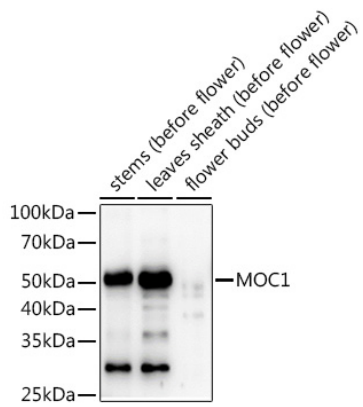
Affinity purification

Storage

Store at -20°C. Avoid freeze / thaw cycles.

Buffer: PBS with 0.01% thimerosal, 50% glycerol, pH7.3.

Validation Data



Western blot analysis of extracts of various tissues from the japonica rice (*Oryza sativa* L.) variety Zhonghua 11, using MOC1 Rabbit pAb (A20329) at 1:1000 dilution.

Secondary antibody: HRP Goat Anti-Rabbit IgG (H+L) (AS014) at 1:10000 dilution.

Lysates/proteins: 25µg per lane.

Blocking buffer: 3% nonfat dry milk in TBST.

Detection: ECL Enhanced Kit (RM00021).

Exposure time: 60s.