

# FGL1 Rabbit mAb

Catalog No.: A20335

Recombinant

1 Publications

## Basic Information

**Observed MW**

35kDa

**Calculated MW**

36kDa

**Category**

Primary antibody

**Applications**

ELISA, WB

**Cross-Reactivity**

Human

**CloneNo number**

ARC5134-01

## Background

Fibrinogen-like 1 is a member of the fibrinogen family. This protein is homologous to the carboxy terminus of the fibrinogen beta- and gamma- subunits which contains the four conserved cysteines of fibrinogens and fibrinogen related proteins. However, this protein lacks the platelet-binding site, cross-linking region and a thrombin-sensitive site which are necessary for fibrin clot formation. This protein may play a role in the development of hepatocellular carcinomas. Four alternatively spliced transcript variants encoding the same protein exist for this gene.

## Recommended Dilutions

WB 1:500 - 1:1000

## Immunogen Information

**Gene ID**

2267

**Swiss Prot**

Q08830

**Immunogen**

Recombinant protein of human FGL-1 Full length (NP\_004458.3).

**Synonyms**

HPS; HFREP1; HP-041; LFIRE1; LFIRE-1; FGL1

## Contact

 | 400-999-6126 | [cn.market@abclonal.com.cn](mailto:cn.market@abclonal.com.cn) | [www.abclonal.com.cn](http://www.abclonal.com.cn)

## Product Information

**Source**

Rabbit

**Isotype**

IgG

**Purification**

Affinity purification

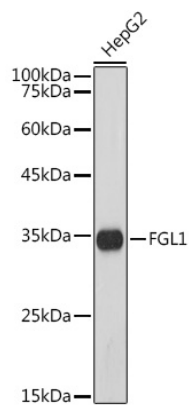
**Storage**

Store at -20°C. Avoid freeze / thaw cycles.

Buffer: PBS with 0.02% sodium azide, 0.05% BSA, 50% glycerol, pH7.3.

## Validation Data

---



Western blot analysis of extracts of HepG2 cells, using FGL1 antibody (A20335) at 1:1000 dilution.  
Secondary antibody: HRP Goat Anti-Rabbit IgG (H+L) (AS014) at 1:10000 dilution.  
Lysates/proteins: 25µg per lane.  
Blocking buffer: 3% nonfat dry milk in TBST.  
Detection: ECL Basic Kit (RM00020).  
Exposure time: 90s.