

# CGAS Rabbit pAb

Catalog No.: A20342

## Basic Information

### Observed MW

62 kDa

### Calculated MW

58 kDa

### Category

Primary antibody

### Applications

WB, ELISA

### Cross-Reactivity

Mouse

## Background

The protein encoded by this gene is a DNA binding cytosolic protein that catalyzes the synthesis of cyclic guanosine monophosphate-adenosine monophosphate (cGAMP) after sensing the presence of DNA in the cytoplasm. cGAMP binds another protein, Stimulator of interferon genes (STING), leading to the induction of interferons, and a host immune response. Reduced expression of this gene inhibits interferon induction in the presence of some viral infections. Alternative splicing results in multiple transcript variants.

## Recommended Dilutions

**WB** 1:1000 - 1:2000

**ELISA** Recommended starting concentration is 1 µg/mL. Please optimize the concentration based on your specific assay requirements. For high-ratio antibody dilutions ( $\geq 1:10000$ ) a sequential dilution method is strongly recommended to ensure measurement accuracy.

## Immunogen Information

### Gene ID

214763

### Swiss Prot

Q8C6L5

### Immunogen

Synthetic peptide. This information is considered to be commercially sensitive.

### Synonyms

Mb21d1; E330016A19Rik; CGAS

## Contact

 | 400-999-6126

 | [cn.market@abclonal.com.cn](mailto:cn.market@abclonal.com.cn)

 | [www.abclonal.com.cn](http://www.abclonal.com.cn)

## Product Information

### Source

Rabbit

### Isotype

IgG

### Purification

Affinity purification

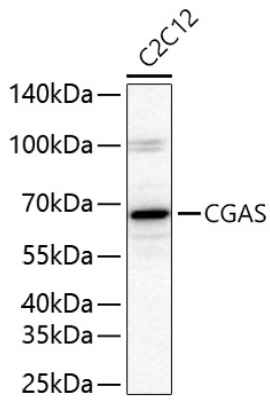
### Storage

Store at -20°C. Avoid freeze / thaw cycles.

Buffer: PBS containing 50% glycerol, preserved with proclin300 or sodium azide (as specified on the Certificate of Analysis), pH 7.3.

## Validation Data

---



Western blot analysis of lysates from C2C12 cells using CGAS Rabbit pAb (A20342) at 1:2000 dilution incubated overnight at 4°C.  
Secondary antibody: HRP-conjugated Goat anti-Rabbit IgG (H+L) (AS014) at 1:10000 dilution.  
Lysates/proteins: 25 µg per lane.  
Blocking buffer: 3% nonfat dry milk in TBST.  
Detection: ECL Basic Kit (RM00020).  
Exposure time: 45 s.