

# PD-L1/CD274 Rabbit mAb

Catalog No.: A20344 **Recombinant**

## Basic Information

**Observed MW**

50kDa

**Calculated MW**

33kDa

**Category**

Primary antibody

**Applications**

ELISA, WB, IHC-P

**Cross-Reactivity**

Human

**CloneNo number**

ARC5060-01

## Background

This gene encodes an immune inhibitory receptor ligand that is expressed by hematopoietic and non-hematopoietic cells, such as T cells and B cells and various types of tumor cells. The encoded protein is a type I transmembrane protein that has immunoglobulin V-like and C-like domains. Interaction of this ligand with its receptor inhibits T-cell activation and cytokine production. During infection or inflammation of normal tissue, this interaction is important for preventing autoimmunity by maintaining homeostasis of the immune response. In tumor microenvironments, this interaction provides an immune escape for tumor cells through cytotoxic T-cell inactivation. Expression of this gene in tumor cells is considered to be prognostic in many types of human malignancies, including colon cancer and renal cell carcinoma. Alternative splicing results in multiple transcript variants.

## Recommended Dilutions

**WB** 1:500 - 1:1000**IHC-P** 1:50 - 1:200

## Immunogen Information

**Gene ID**

29126

**Swiss Prot**

Q9NZQ7

**Immunogen**

Recombinant protein of human PD-L1 extracellular domain.

**Synonyms**

B7-H; B7H1; PDL1; PD-L1; hPD-L1; PDCD1L1; PDCD1LG1; PD-L1/CD274

## Contact

 | 400-999-6126 | [cn.market@abclonal.com.cn](mailto:cn.market@abclonal.com.cn) | [www.abclonal.com.cn](http://www.abclonal.com.cn)

## Product Information

**Source**

Rabbit

**Isotype**

IgG

**Purification**

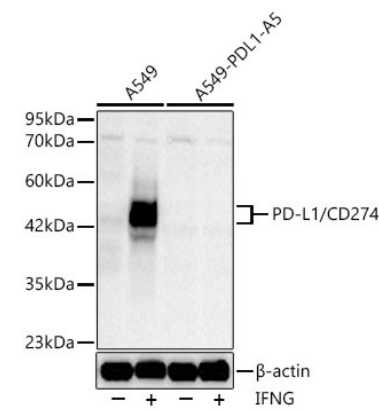
Affinity purification

**Storage**

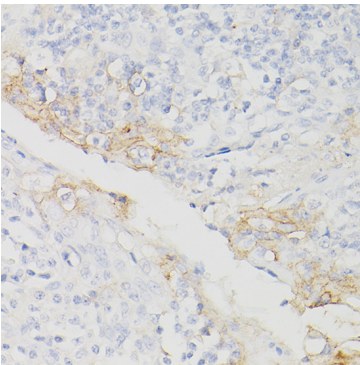
Store at -20°C. Avoid freeze / thaw cycles.

Buffer: PBS with 0.05% proclin300, 0.05% BSA, 50% glycerol, pH7.3.

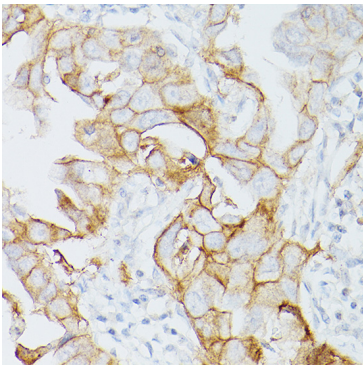
Validation Data



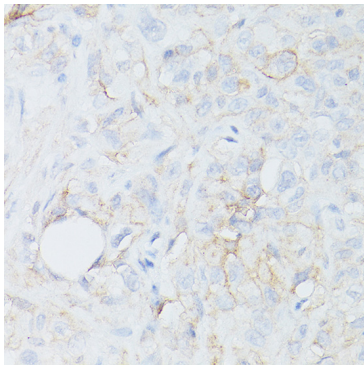
Western blot analysis of lysates from wild type (WT) and PD-L1/CD274 knockout (KO) A549 cells using PD-L1/CD274 Rabbit mAb (A20344) at 1:500 dilution. Wild type (WT) and PD-L1/CD274 knockout (KO) A549 cells were treated by IFNG (100 ng/mL) at 37°C for 48 hours. Secondary antibody: HRP Goat Anti-Rabbit IgG (H+L) (A5014) at 1:10000 dilution. Lysates/proteins: 25 µg per lane. Blocking buffer: 3% nonfat dry milk in TBST. Detection: ECL Basic Kit (RM00020). Exposure time: 45s.



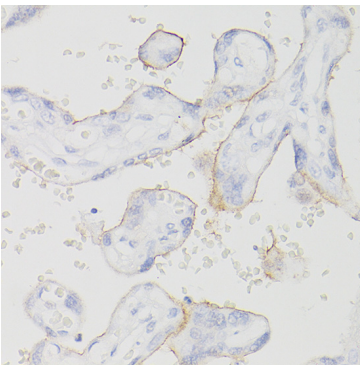
Immunohistochemistry analysis of PD-L1/CD274 in paraffin-embedded Human chronic tonsillitis using PD-L1/CD274/CD274 Rabbit mAb (A20344) at dilution of 1:200 (40x lens). Perform high pressure antigen retrieval with 10 mM citrate buffer pH 6.0 before commencing with IHC staining protocol.



Immunohistochemistry analysis of PD-L1/CD274 in paraffin-embedded Human lung adenocarcinoma using PD-L1/CD274/CD274 Rabbit mAb (A20344) at dilution of 1:200 (40x lens). Perform high pressure antigen retrieval with 10 mM citrate buffer pH 6.0 before commencing with IHC staining protocol.



Immunohistochemistry analysis of PD-L1/CD274 in paraffin-embedded Human lung cancer sarcoma using PD-L1/CD274/CD274 Rabbit mAb (A20344) at dilution of 1:200 (40x lens). Perform high pressure antigen retrieval with 10 mM citrate buffer pH 6.0 before commencing with IHC staining protocol.



Immunohistochemistry analysis of PD-L1/CD274 in paraffin-embedded human placenta using PD-L1/CD274/CD274 Rabbit mAb (A20344) at dilution of 1:200 (40x lens). Perform high pressure antigen retrieval with 10 mM citrate buffer pH 6.0 before commencing with IHC staining protocol.