

OsGRF4 Rabbit pAb

Catalog No.: A20348

1 Publications

Basic Information

Observed MW

40kDa

Calculated MW

42kDa

Category

Primary antibody

Applications

WB, ELISA

Cross-Reactivity

Oryza sativa

Background

Transcription activator that plays a role in the regulation of meristematic function in leaves, stems and inflorescences. Transcription activator that plays a regulatory role in grain development. Positively regulates grain size by promoting cell division and expansion, leading to increased grain length and width. Positively regulates the expression of genes promoting cell proliferation. Activates the expression of expansin genes to promote cell expansion and grain size. May promote grain size by activating brassinosteroid responses. Component of a network formed by the microRNA396 (miRNA396), the GRFs and their interacting factors (GIFs) acting in the regulation of meristem function, at least partially through the control of cell proliferation (Probable). Component of the miRNA396c-GRF4-GIF1 regulatory module that plays an important role in grain size determination.

Recommended Dilutions

WB 1:500 - 1:2000**ELISA** Recommended starting concentration is 1 µg/mL. Please optimize the concentration based on your specific assay requirements.

Immunogen Information

Gene ID

4330436

Swiss Prot

Q6ZIK5

Immunogen

Recombinant protein (or fragment). This information is considered to be commercially sensitive.

Synonyms

GL2; GS2; PT2; GLW2; GRF4; grf2; OsGRF4; OsJ_08054; OJ1111_E07.19

Contact

 | 400-999-6126 | cn.market@abclonal.com.cn | www.abclonal.com.cn

Product Information

Source

Rabbit

Isotype

IgG

Purification

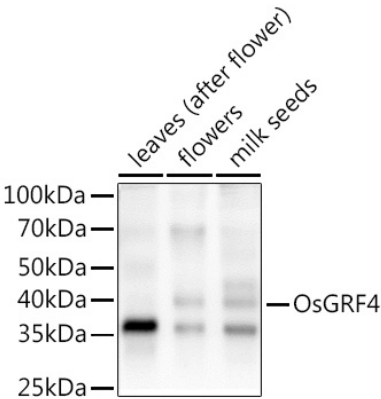
Affinity purification

Storage

Store at -20°C. Avoid freeze / thaw cycles.

Buffer: PBS with 0.02% sodium azide, 50% glycerol, pH7.3.

Validation Data



Western blot analysis of extracts of various tissues from the japonica rice (*Oryza sativa* L.) variety Zhonghua 11, using OsGRF4 Rabbit pAb (A20348) at 1:1000 dilution.
Secondary antibody: HRP-conjugated Goat anti-Rabbit IgG (H+L) (AS014) at 1:10000 dilution.
Lysates/proteins: 25µg per lane.
Blocking buffer: 3% nonfat dry milk in TBST.
Detection: ECL Enhanced Kit (RM00021).
Exposure time: 30s.