

# OsTB1 Rabbit pAb

Catalog No.: A20349

## Basic Information

### Observed MW

52kDa

### Calculated MW

42kDa

### Category

Primary antibody

### Applications

ELISA, WB

### Cross-Reactivity

Oryza sativa

## Background

Probable transcription factor that functions as a negative regulator of lateral branching, presumably through its expression in axillary buds. Involved in the fine tuning of shoot branching. May function as an integrator of multiple signaling pathways to regulate the development of axillary buds. Works partially downstream of strigolactones to inhibit bud outgrowth. Binds to MADS57 to suppress the negative regulation of D14 by MADS57 and balance the expression of D14 for tillering

## Recommended Dilutions

WB 1:500 - 1:2000

## Immunogen Information

### Gene ID

4333856

### Swiss Prot

Q8LN68

### Immunogen

Recombinant fusion protein containing a sequence corresponding to amino acids 270-388 of Oryza sativa OsTB1. (Q8LN68).

### Synonyms

TCP8; OsTB1

## Contact

 | 400-999-6126

 | [cn.market@abclonal.com.cn](mailto:cn.market@abclonal.com.cn)

 | [www.abclonal.com.cn](http://www.abclonal.com.cn)

## Product Information

### Source

Rabbit

### Isotype

IgG

### Purification

Affinity purification

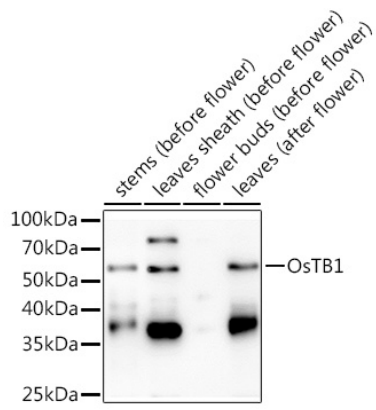
### Storage

Store at -20°C. Avoid freeze / thaw cycles.

Buffer: PBS with 0.01% thimerosal, 50% glycerol, pH7.3.

## Validation Data

---



Western blot analysis of extracts of various tissues from the japonica rice (*Oryza sativa* L.) variety Zhonghua 11, using OsTB1 Rabbit pAb (A20349) at 1:1000 dilution.

Secondary antibody: HRP Goat Anti-Rabbit IgG (H+L) (AS014) at 1:10000 dilution.

Lysates/proteins: 25µg per lane.

Blocking buffer: 3% nonfat dry milk in TBST.

Detection: ECL Basic Kit (RM00020).

Exposure time: 60s.