

TET2 Rabbit pAb

Catalog No.: A20365

Basic Information

Observed MW

280kDa

Calculated MW

212kDa

Category

Primary antibody

Applications

ELISA, WB, IF/ICC

Cross-Reactivity

Human, Mouse, Rat

Background

Enables methylcytosine dioxygenase activity. Involved in cellular protein modification process; myeloid cell differentiation; and positive regulation of transcription by RNA polymerase II. Acts upstream of or within several processes, including DNA demethylation; animal organ development; and hematopoietic stem cell homeostasis. Predicted to be located in nucleoplasm. Predicted to be active in nucleus. Is expressed in several structures, including brain; extraembryonic component; lower urogenital tract; reproductive system; and urethra epithelium. Human ortholog(s) of this gene implicated in gastrointestinal system cancer (multiple); hematologic cancer (multiple); lung non-small cell carcinoma; and primary immunodeficiency disease. Orthologous to human TET2 (tet methylcytosine dioxygenase 2).

Recommended Dilutions

WB 1:500 - 1:1000**IF/ICC** 1:50 - 1:200

Immunogen Information

Gene ID

214133

Swiss Prot

Q4JK59


Immunogen

Recombinant fusion protein containing a sequence corresponding to amino acids 288-448 of mouse TET2 (NP_001035490.2).

Synonyms

Ayu17-449; mKIAA1546; E130014J05Rik; TET2

Contact

 | 400-999-6126 | cn.market@abclonal.com.cn | www.abclonal.com.cn

Product Information

Source

Rabbit

Isotype

IgG

Purification

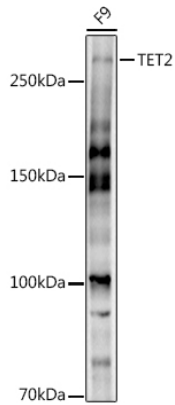
Affinity purification

Storage

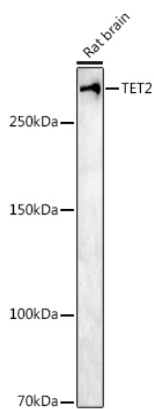
Store at -20°C. Avoid freeze / thaw cycles.

Buffer: PBS with 0.05% proclin300, 50% glycerol, pH7.3.

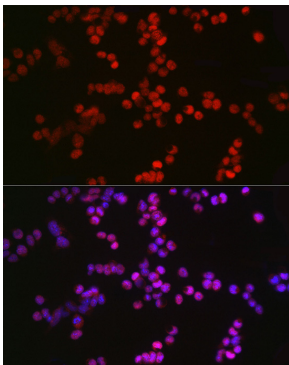
Validation Data



Western blot analysis of extracts of F9 cells, using TET2 antibody (A20365) at 1:1000 dilution.
Secondary antibody: HRP Goat Anti-Rabbit IgG (H+L) (AS014) at 1:10000 dilution.
Lysates/proteins: 25µg per lane.
Blocking buffer: 3% nonfat dry milk in TBST.
Detection: ECL Basic Kit (RM00020).
Exposure time: 180s.



Western blot analysis of extracts of Rat brain, using TET2 antibody (A20365) at 1:1000 dilution.
Secondary antibody: HRP Goat Anti-Rabbit IgG (H+L) (AS014) at 1:10000 dilution.
Lysates/proteins: 25µg per lane.
Blocking buffer: 3% nonfat dry milk in TBST.
Detection: ECL Enhanced Kit (RM00021).
Exposure time: 180s.



Immunofluorescence analysis of F9 cells using TET2 Rabbit pAb (A20365) at dilution of 1:100 (40x lens). Blue: DAPI for nuclear staining.